



GROUND INVESTIGATIONS IRELAND
Geotechnical & Environmental

Catherinestown House,
Hazelhatch Road,
Newcastle,
Co. Dublin.
D22 YD52

Tel: 01 601 5175 / 5176
Email: info@gii.ie
Web: www.gii.ie

Ground Investigations Ireland

Lissinagroagh Wind Farm

Tobin Consulting Engineers

Ground Investigation Report

April 2026





GROUND INVESTIGATIONS IRELAND
Geotechnical & Environmental

Catherinestown House,
Hazelhatch Road,
Newcastle,
Co. Dublin.
D22 YD52

Tel: 01 601 5175 / 5176
Email: info@gii.ie
Web: www.gii.ie

DOCUMENT CONTROL SHEET

Project Title	Lissinagroagh Wind Farm
Engineer	Tobin
Project No	15017-09-25
Document Title	Ground Investigation Report

Rev.	Status	Author(s)	Reviewed By	Approved By	Office of Origin	Issue Date
B	Final	R O'Neill	D MagLochlainn	S Kealy	Dublin	02 April 2026

Ground Investigations Ireland Ltd. present the results of the fieldworks and laboratory testing in accordance with the specification and related documents provided by or on behalf of the client. The possibility of variation in the ground and/or groundwater conditions between or below exploratory locations or due to the investigation techniques employed must be taken into account when this report and the appendices inform designs or decisions where such variation may be considered relevant. Ground and/or groundwater conditions may vary due to seasonal, man-made or other activities not apparent during the fieldworks and no responsibility can be taken for such variation. The data presented and the recommendations included in this report and associated appendices are intended for the use of the client and the client's geotechnical representative only and any duty of care to others is excluded unless approved in writing.



www.gii.ie



Catherinestown House,
Hazelhatch Road,
Newcastle,
Co. Dublin.
D22 YD52

Tel: 01 601 5175 / 5176
Email: info@gii.ie
Web: www.gii.ie

GROUND INVESTIGATIONS IRELAND

Geotechnical & Environmental

CONTENTS

1.0	Preamble.....	1
2.0	Overview.....	1
2.1.	Background.....	1
2.2.	Purpose and Scope	1
3.0	Subsurface Exploration	1
3.1.	General	1
3.2.	Trial Pits.....	2
3.3.	Hand Auger	2
3.4.	Peat Probing	2
3.5.	Rotary Boreholes.....	2
3.6.	Surveying	3
3.7.	Groundwater Monitoring Installations	3
3.8.	Laboratory Testing	3
4.0	Ground Conditions.....	4
4.1.	General	4
4.2.	Groundwater	5
4.3.	Laboratory Testing	5
4.3.1.	Geotechnical Laboratory Testing	5
5.0	Recommendations & Conclusions	6
5.1.	General	6
5.2.	Excavations.....	6

APPENDICES

Appendix 1	Site Location Plan
Appendix 2	Trial Pit Records
Appendix 3	Gouge Auger Records
Appendix 4	Peat Probe Records
Appendix 5	Rotary Core Records
Appendix 6	Laboratory Testing



www.gii.ie

1.0 Preamble

On the instructions of Tobin Consulting Engineers, a site investigation was carried out by Ground Investigations Ireland Ltd., between November 2025 and March 2026 at the site of the proposed Wind Farm in Lissinagroagh Co. Leitrim.

2.0 Overview

2.1. Background

It is proposed to construct a new Wind Farm with associated services, access roads and borrow pits at the proposed site. The site is currently used for Coillte Forestry and is situated in the hills to the northeast of Manorhamilton. The site covers an area of over 3.00km from North to South and over 3.00km East to West.

2.2. Purpose and Scope

The purpose of the site investigation was to investigate subsurface conditions utilising a variety of investigative methods in accordance with the project specification. The scope of the work undertaken for this project included the following:

- Visit project site to observe existing conditions
- Carry out 8 No. Trial Pits to a maximum depth of 3.20m BGL
- Carry out 17 No. Hand Augers to a maximum depth of 1.80m BGL
- Carry out 97 No. Peat Probes to determine the depth of Peat deposits
- Carry out 2 No. Rotary Core Boreholes to a maximum depth of 12.80m BGL
- Installation of 1 No. Groundwater monitoring wells
- Geotechnical & Environmental Laboratory testing
- Report with recommendations

3.0 Subsurface Exploration

3.1. General

During the ground investigation a programme of intrusive investigation specified by the Consulting Engineer was undertaken to determine the sub surface conditions at the proposed site. Regular sampling and in-situ testing was undertaken in the exploratory holes to facilitate the geotechnical descriptions and to enable laboratory testing to be carried out on the soil samples recovered during excavation and drilling.

The procedures used in this site investigation are in accordance with Eurocode 7 Part 2: Ground Investigation and testing (ISEN 1997 – 2:2007) and B.S. 5930:2015.

3.2. Trial Pits

The trial pits were excavated using 8T tracked excavator at the locations shown in the exploratory hole location plan in Appendix 1. The locations were checked using a CAT scan to minimise the potential for encountering services during the excavation. The trial pits were sampled, logged and photographed by a Engineering Geologist prior to backfilling with arisings. Notes were made of any services, inclusions, pit stability, groundwater encountered and the characteristics of the strata encountered and are presented on the trial pit logs which are provided in Appendix 2 of this Report.

3.3. Hand Auger

The Hand Auger is a manually operated stainless-steel sampling auger. The Hand Auger consists of a corkscrew shaped sampler, 1 metre extension bars and a T shaped handle. The corkscrew shaped tip of the sampler is inserted into the ground. The operator then manually turns the T handle while using their body weight to rotate the sampler into the ground. The corkscrew sampler fills with material as it is rotated into the ground. The Hand Auger recovers a 300mm disturbed sample which is recovered from the exploratory hole, logged, sampled and photographed. The process is repeated with the extension bars used to achieve greater depths until the desired strata is sampled or the Hand Auger cannot progress any further. The Hand Auger records are provided in Appendix 3 of this Report.

3.4. Peat Probing

Manually operated peat probes were carried out at the locations shown in the location plan in Appendix 1 to determine the depth of Peat. The test consists of manually driving a cone on metre long extendible rods into the peat until a stiffer deposit or an obstruction is encountered. This process was carried out at locations determined by Tobin Consulting Engineers. Where the depth of peat was greater than 1.00m in depth, additional peat probes were carried out to determine the extent of the peat deposits. The peat probe logs are provided in Appendix 4 of this Report.

3.5. Rotary Boreholes

The rotary coring was carried out by a track mounted T44 Beretta rig at the locations shown on the location plan in Appendix 1. The rotary boreholes were completed from the ground surface or alternatively, where noted on the individual borehole log, from the base of the cable percussion borehole where a temporary liner was installed to facilitate follow-on rotary coring.

The T44 Beretta is equipped with rubber tracks which allow for short travel on pavement surfaces avoiding any damage to the surface. The T44 Beretta utilises a triple tube core barrel system operated using a wireline drilling process. The outer barrel is rotated by the drill rods and at its lower end, carries the coring bit. The inner barrel is mounted on a swivel so that it does not rotate during the process. The third barrel or liner is placed within the second one to retain the core intact and to preserve as much as possible the fabric of the drilling stratum. The core is cut by the coring bit and passes to the inner liner. The core is brought up to the surface within the inner barrel on a small diameter wire rope or line attached to the "overshoot" recovery tool which is then placed into a core box in order of recovery. A drilling fluid, typically air mist or

water flush is passed from the surface through hollow drill rods to the drill bit and is used to cool the drill bit. Temporary casing is used in some situations to support unstable ground or to seal off fissures or voids. It should be noted that the rotary coring can only achieve limited recovery in overburden, particularly granular or weakly cemented strata due to the flushing medium washing away the cohesive fraction during coring. The recovery achieved, where required is noted on the borehole logs and core photographs are provided to allow assessment of the core recovered. The rotary borehole logs are provided in Appendix 5 of this Report.

3.6. Surveying

The exploratory hole locations have been recorded using a KQ GEO Technologies KQ-M8 System which records the coordinates and elevation of the locations to ITM as required by the project specification. The coordinates and elevations are provided on the exploratory hole logs in the appendices of this Report.

3.7. Groundwater Monitoring Installations

Groundwater Monitoring Installation were installed upon the completion of the boreholes to enable sampling and the determination of the equilibrium groundwater level. The typical groundwater monitoring installation consists of a 50mm uPVC/HDPE slotted pipe with a pea gravel response zone and bentonite seal installed to the Engineers specification. Where required the standpipe is sealed with a gas tap and finished with a durable steel cover fixed in place with a concrete surround. The installation details are provided on the exploratory hole logs in the appendices of this Report.

3.8. Laboratory Testing

Samples were selected from the exploratory holes for a range of geotechnical and environmental testing to assist in the classification of soils and to provide information for the proposed design. Geotechnical testing consisting of moisture content, Atterberg limits, Particle Size Distribution (PSD), and particle density are being carried out in NMTL's Geotechnical Laboratory in Carlow. The results of the laboratory testing will be included in Appendix 6 of this Report.

4.0 Ground Conditions

4.1. General

The ground conditions encountered during the investigation are summarised below with reference to insitu and laboratory test results. The full details of the strata encountered during the ground investigation are provided in the exploratory hole logs included in the appendices of this report.

The sequence of strata encountered were variable across the site and generally comprised;

- Topsoil
- Made Ground
- Peat Deposits
- Cohesive Deposits
- Weathered Bedrock
- Bedrock

TOPSOIL: Topsoil was encountered in the Trial Pit and Borehole locations and was present to a maximum depth of 0.30m BGL.

PEAT: Peat was encountered from the surface of the majority of exploratory hole locations. Surface Peat deposits were generally described as *Spongy dark brown PEAT* and was present to a maximum depth of 0.20m BGL. At location GA10 Peat deposits were encountered to 1.00m BGL and were described as *dark brown slightly sandy clayey PEAT*. The maximum depth of PEAT encountered from the peat probes was between 0.68m BGL at brash line 3 to 4.50m BGL at brash line 1 at the north of the site.

MADE GROUND: Made Ground deposits were encountered beneath the Topsoil at location TP09 and was present to a depth of 0.60m BGL. These deposits were described generally as *Blueish grey slightly gravelly silty Clay with fragments of glass and fabric*

COHESIVE DEPOSITS: Cohesive deposits were encountered beneath the Peat/Made Ground and were described typically as *dark brown or brown mottled grey slightly sandy slightly gravelly silty CLAY with low cobbles and boulders* content overlying a *dark grey or blueish grey slightly sandy gravelly CLAY with medium cobbles and boulders content*. The secondary sand and gravel constituents varied across the site and with depth, with granular lenses occasionally present in the cohesive matrix. The strength of the cohesive deposits typically increased with depth and was firm becoming firm to stiff below with depth. These deposits had low (<5%), medium (5%-20%) or high (20%-50%) cobble and boulder content, where noted on the exploratory hole logs.

WEATHERED BEDROCK: At location of BH02 weathered bedrock was encountered at a depth of 2.30m BGL. This material was recovered typically as angular gravel to boulder sized fragments of SANDSTONE.

BEDROCK: At location BH01 the rotary core recovered *Strong to Medium strong dark grey thinly to thickly laminated to thickly bedded fine to medium grain SANDSTONE distinctly weathered* with some residual soil recovered. There is also a 30-50mm Clay infilled fracture running vertically through the core. At location BH02 rotary core recovered *Very strong grey fine to coarse grain thickly bedded SANDSTONE distinctly weathered interbedded with dark grey fine grained thinly bedded SILTSTONE moderately weathered* with some pyrite mineralisation. This is typical of the Meenymore Formation, which is noted on the geological mapping of the the proposed site.

The depth to rock varies from 6.10m BGL at location BH02 and to a maximum of 9.80m BGL at location BH01. The total core recovery is good, typically 100% with some of the uppermost runs dropping to 93% or 40%. The SCR and RQD both are relatively poor in the upper weathered zone, often recovered as non-intact, however both indices show an increase with depth in each of the boreholes.

4.2. Groundwater

No groundwater was noted during the investigation however we would point out that these exploratory holes did not remain open for sufficiently long periods of time to establish the hydrogeological regime and groundwater levels would be expected to vary with the time of year, rainfall, nearby construction and other factors. For this reason, a standpipe was installed in BH01 to allow the equilibrium groundwater level to be determined. The groundwater monitoring is included in Appendix 7 of this Report.

4.3. Laboratory Testing

4.3.1. Geotechnical Laboratory Testing

The geotechnical testing carried out on soil samples recovered generally confirm the descriptions on the logs with the primary constituent of the cohesive deposits found to be a CLAY with intermediate plasticity. The Particle Size Distribution tests confirm that generally the cohesive deposits are well-graded/gap-graded with percentages of sands and gravels ranging between 22.10% and 70.80% generally with fines contents of 22.9% to 69%.

The results from the completed laboratory testing will be included in Appendix 6 of this report.

5.0 Recommendations & Conclusions

5.1. General

The recommendations given and opinions expressed in this report are based on the findings as detailed in the exploratory hole records. Where an opinion is expressed on the material between exploratory hole locations, this is for guidance only and no liability can be accepted for its accuracy. No responsibility can be accepted for conditions which have not been revealed by the exploratory holes. Limited information has been provided at the ground investigation stage and any designs based on the recommendations or conclusions should be completed in accordance with the current design codes, taking into account the variation and the specific details contained within the exploratory hole logs.

5.2. Excavations

Short term temporary excavations in the cohesive deposits will remain stable for a limited time only and will require to be appropriately battered or the sides supported if the excavation is below 1.25m BGL or is required to permit man entry.

At the location of BH02 the weathered bedrock zone between 2.30m to 6.10m BGL may provide enough material to operate as a barrow pit. There is however potential for variation of this material within the vicinity of the borehole, and we would further recommend carrying out additional trial pits to determine the full extent and depth of this structure.

At the location of BH01 the bedrock is too deep to make it an economically viable option.

Excavations in the Made Ground, Peat or soft Cohesive Deposits will require to be appropriately battered or the sides supported due to the low strength of these deposits.

Any excavations which penetrate the granular deposits will require to be appropriately battered or the sides supported and are likely to require dewatering due to the groundwater seepages noted in the exploratory hole logs in the Appendices of this Report.

The groundwater and stability noted on the trial pit logs should be consulted when determining the most appropriate construction methods for excavations.

Any waste material to be removed off site should be disposed of to a suitably licenced landfill.

The recommendations provided in this report should be verified in the design of the proposed buildings, using the full details of the loading conditions and taking into consideration the allowable tolerable settlements/movements that the building can accommodate. The founding strata should be inspected and verified by a suitably qualified engineer prior to construction of the building foundations.

APPENDIX 1 - Site Location Plan



591300E 591400E 591500E 591600E 591700E 591800E 591900E 592000E 592100E 592200E 592300E 592400E 592500E 592600E 592700E 592800E 592900E

844700N
844600N
844500N
844400N
844300N
844200N
844100N
844000N
843900N
843800N
843700N
843600N
843500N



844000N

600000E



- Trial Pits
- ⊕ Gouge Auger
- ⊙ Boreholes
- ⊙ Peat Probes

Client:



Project Code:
15017-09-25

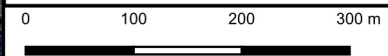
Project Title:
Lissinagroagh Wind Farm

Drawing Title:
Figure 1 Site Location (North)



GROUND INVESTIGATIONS IRELAND
Geotechnical & Environmental

Ground Investigations Ireland Ltd.
Catherinstown House,
Hazelhatch Road,
Newcastle, Co. Dublin
www.gii.ie 01-6015175/5176

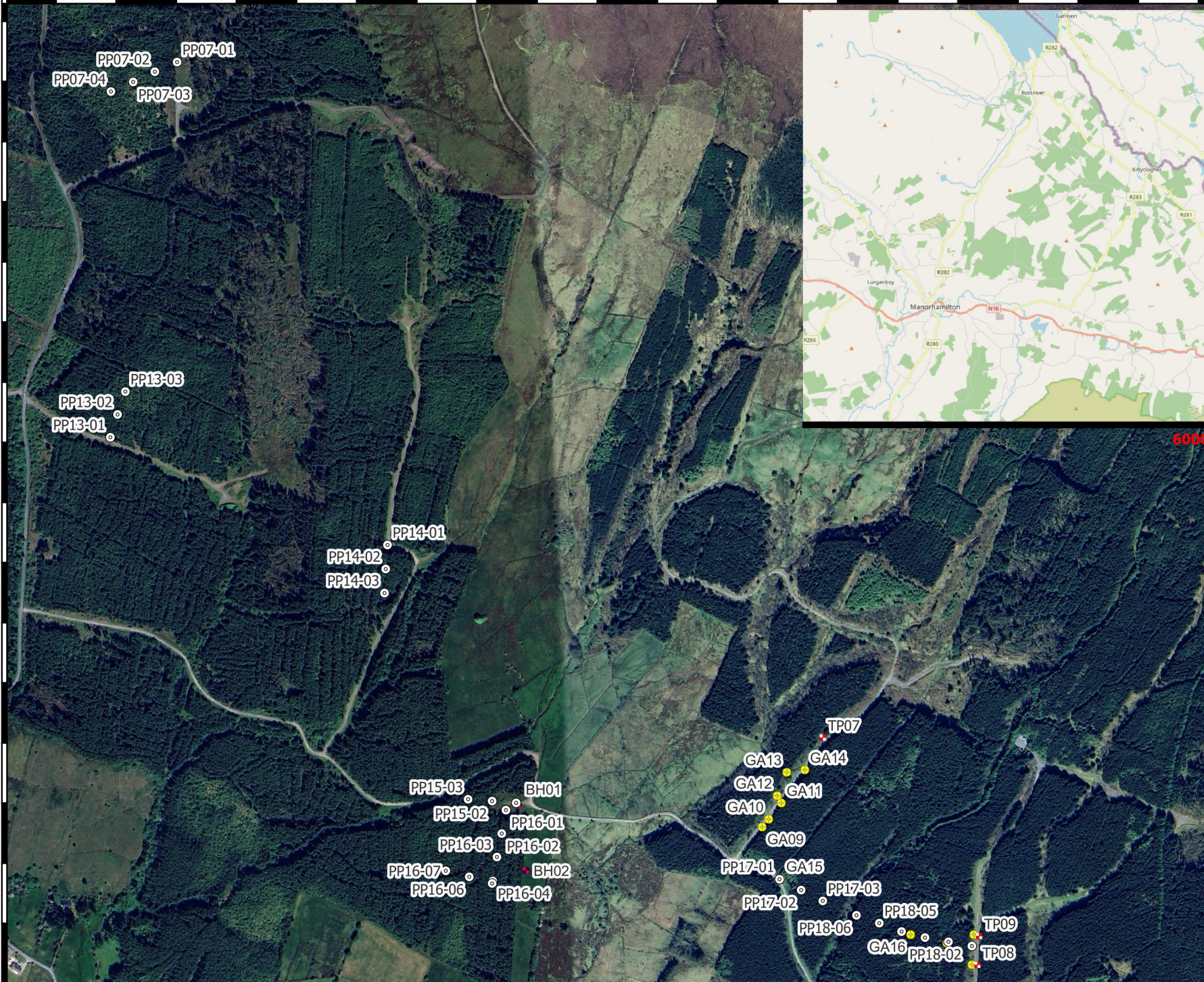


Drawn By: RON	Date: 12-12-2025
------------------	---------------------

591300E 591400E 591500E 591600E 591700E 591800E 591900E 592000E 592100E 592200E 592300E 592400E 592500E 592600E 592700E 592800E 592900E

592000E 592100E 592200E 592300E 592400E 592500E 592600E 592700E 592800E 592900E 593000E 593100E 593200E 593300E 593400E 593500E 593600E 593700E 593800E 593900E

840900N 841000N 841100N 841200N 841300N 841400N 841500N 841600N 841700N 841800N 841900N 842000N 842100N 842200N 842300N 842400N



- Trial Pits
- Gouge Auger
- Boreholes
- Peat Probes

84000N

Client:



60000E

Project Code:
15017-09-25

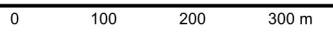
Project Title:
Lissinagroagh Wind Farm

Drawing Title:
Figure 1 Site Location
(South-East)



GROUND INVESTIGATIONS IRELAND
Geotechnical & Environmental

Ground Investigations Ireland Ltd.
Catherinstown House,
Hazelhatch Road,
Newcastle, Co. Dublin
www.gii.ie 01-6015175/5176

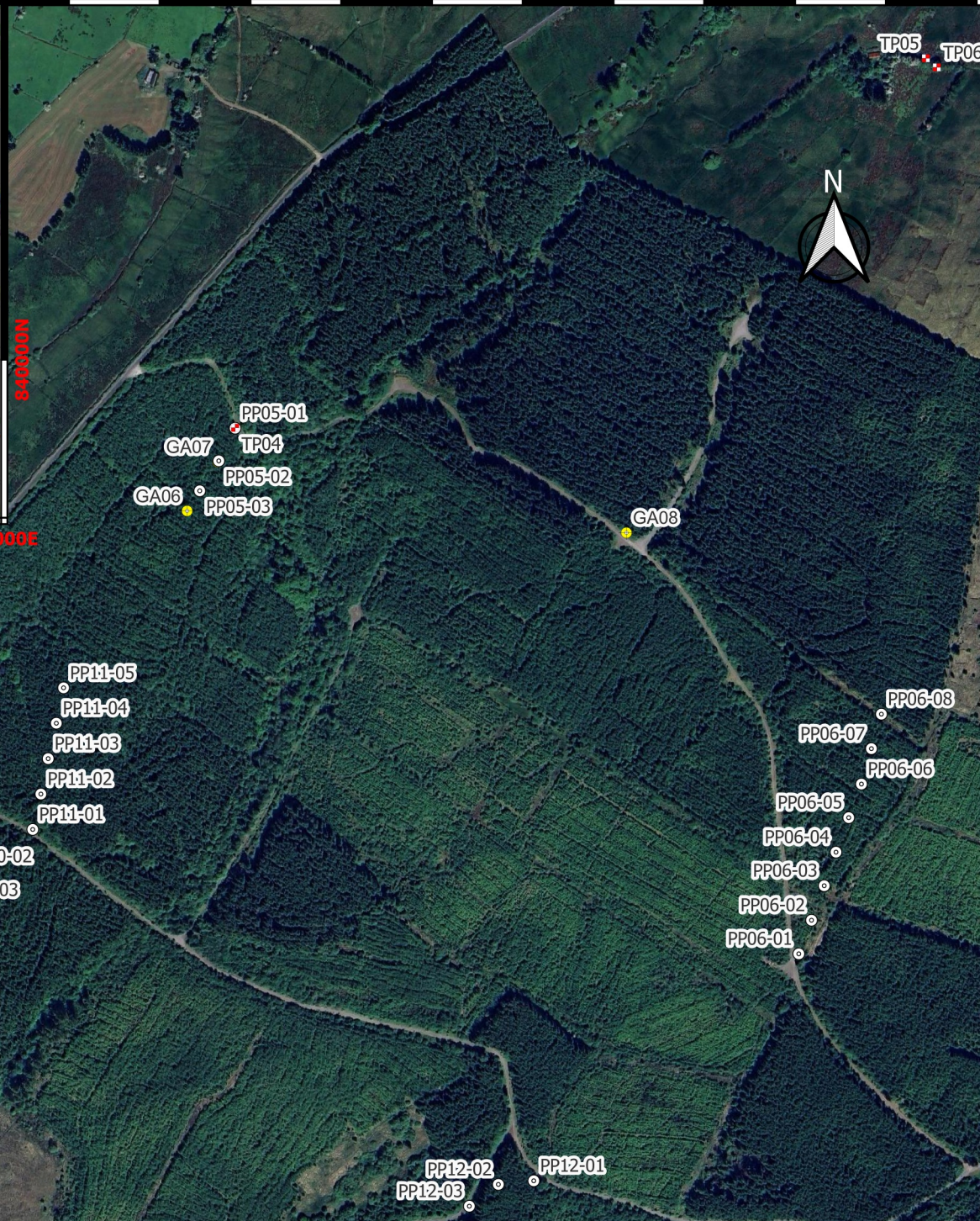






Drawn By: RON	Date: 12-12-2025
------------------	---------------------

592000E 592100E 592200E 592300E 592400E 592500E 592600E 592700E 592800E 592900E 593000E 593100E 593200E 593300E 593400E 593500E 593600E 593700E 593800E 593900E

590000E 590100E 590200E 590300E 590400E 590500E 590600E 590700E 590800E 590900E 591000E 591100E 591200E 591300E 591400E 591500E 591600E

842900N
842800N
842700N
842600N
842500N
842400N
842300N
842200N
842100N
842000N
841900N
841800N
841700N



-  Trial Pits
-  Gouge Auger
-  Boreholes
-  Peat Probes

Client:



Project Code:
15017-09-25

Project Title:
Lissinagroagh Wind Farm

Drawing Title:
Figure 1 Site Location
(South-West)



GROUND INVESTIGATIONS IRELAND
Geotechnical & Environmental

Ground Investigations Ireland Ltd.
Catherinstown House,
Hazelhatch Road,
Newcastle, Co. Dublin
www.gii.ie 01-6015175/5176

0 100 200 300 m

Drawn By: **RON** Date: **12-12-2025**

590000E 590100E 590200E 590300E 590400E 590500E 590600E 590700E 590800E 590900E 591000E 591100E 591200E 591300E 591400E 591500E 591600E

APPENDIX 2 – Trial Pit Records





GROUND INVESTIGATIONS IRELAND
Geotechnical & Environmental

Trial Pit Log

Project Name: Lissinagroagh Wind Farm		Client: Tobin		Date: 20/11/2025	
Location: Co. Leitrim		Contractor: Ground Investigations Ireland		Co-ords: E590374.00 N842041.60	
Project No. : 15017-09-25		Crew Name: Tom Cull		Equipment: 8T Tracked Excavator	
Location Number TP03	Location Type TP	Level	Logged By MD	Scale 1:25	Page Number Sheet 1 of 1

Sample and In Situ Testing			Depth (m)	Level (m)	Legend	Stratum Description	
Depth (m)	Type	Results					
0.50	B	HVP=84 kPa	0.10			TOPSOIL: Dark brown slightly sandy slightly gravelly Clay with grass and rootlets. Stiff greyish brown slightly sandy gravelly silty CLAY. Sand is fine to coarse. Gravel is subangular to subrounded fine to coarse.	0.5
0.50	HV		0.80			Firm to stiff dark greyish brown slightly sandy gravelly slightly silty CLAY with medium subrounded to rounded cobble content. Sand is fine to coarse. Gravel is subangular to subrounded fine to coarse.	1.0
1.00	B		1.70			Stiff dark grey slightly sandy very gravelly CLAY with medium subrounded to rounded cobble content. Sand is fine to coarse. Gravel is subangular to subrounded fine to coarse.	1.5
2.00	B		2.50			OBSTRUCTION at due to rock or boulder	2.0
							2.5
							3.0
							3.5
							4.0
							4.5
							5.0

Dimensions		Trench Support and Comment		Termination	
Pit Length 2.40	Pit Width 0.90	Pit Stability Stable		Shoring Used	Termination Reason Obstruction

Remarks
No groundwater encountered. Pit backfilled upon completion.





GROUND INVESTIGATIONS IRELAND
Geotechnical & Environmental

Trial Pit Log

Project Name: Lissinagroagh Wind Farm		Client: Tobin		Date: 21/11/2025	
Location: Co. Leitrim		Contractor: Ground Investigations Ireland		Co-ords: E590857.00 N842512.00	
Project No. : 15017-09-25		Crew Name: Tom Cull		Equipment: 8T Tracked Excavator	
Location Number TP04	Location Type TP	Level	Logged By RON	Scale 1:25	Page Number Sheet 1 of 1

Sample and In Situ Testing			Depth (m)	Level (m)	Legend	Stratum Description	
Depth (m)	Type	Results					
0.00	HV	HVP=30 kPa				TOPSOIL: Dark brown slightly sandy slightly gravelly Clay with grass and rootlets.	
0.50	B		0.30			Soft light brown mottled orange slightly sandy slightly gravelly silty CLAY. Sand is fine to coarse. Gravel is subangular to subrounded fine to coarse.	0.5
0.50	HV	HVP=32 kPa	0.80			Soft to firm light grey slightly sandy slightly gravelly silty CLAY. Sand is fine to coarse. Gravel is subangular to subrounded fine to coarse.	1.0
1.50	B		1.00			Firm to stiff dark grey slightly sandy gravelly silty CLAY with medium subangular to subrounded cobble content. Sand is fine to coarse. Gravel is subangular to subrounded fine to coarse.	1.5
			2.50			OBSTRUCTION at due to rock or boulder	2.5
							3.0
							3.5
							4.0
							4.5
							5.0

Dimensions		Trench Support and Comment		Termination
Pit Length 2.40	Pit Width 0.90	Pit Stability Stable	Shoring Used	Termination Reason Obstruction

Remarks
No groundwater encountered. Pit backfilled upon completion.





GROUND INVESTIGATIONS IRELAND
Geotechnical & Environmental

Trial Pit Log

Project Name: Lissinagroagh Wind Farm		Client: Tobin		Date: 21/11/2025	
Location: Co. Leitrim		Contractor: Ground Investigations Ireland		Co-ords: E591467.00 N842872.00	
Project No. : 15017-09-25		Crew Name: Tom Cull		Equipment: 8T Tracked Excavator	
Location Number TP05	Location Type TP	Level	Logged By RON	Scale 1:25	Page Number Sheet 1 of 1

Sample and In Situ Testing			Depth (m)	Level (m)	Legend	Stratum Description	
Depth (m)	Type	Results					
0.00	HV	HVP=30 kPa	0.20			TOPSOIL: Dark brown slightly sandy slightly gravelly Clay with grass and rootlets.	
0.50	B	HVP=36 kPa				0.70	
0.50	HV		1.00	1.00			Soft to firm brown mottled grey slightly sandy gravelly CLAY with low subrounded to rounded cobble content. Sand is fine to coarse. Gravel is subangular to subrounded fine to coarse.
1.00	B	2.00				2.00	
							2.5
							3.0
							3.5
							4.0
							4.5
							5.0

Dimensions		Trench Support and Comment		Termination
Pit Length 2.40	Pit Width 0.90	Pit Stability Stable	Shoring Used	Termination Reason Obstruction

Remarks
No groundwater encountered. Pit backfilled upon completion.





GROUND INVESTIGATIONS IRELAND
Geotechnical & Environmental

Trial Pit Log

Project Name: Lissinagroagh Wind Farm		Client: Tobin		Date: 21/11/2025	
Location: Co. Leitrim		Contractor: Ground Investigations Ireland		Co-ords: E591654.00 N842858.00	
Project No. : 15017-09-25		Crew Name: Tom Cull		Equipment: 8T Tracked Excavator	
Location Number TP06	Location Type TP	Level	Logged By RON	Scale 1:25	Page Number Sheet 1 of 1

Sample and In Situ Testing			Depth (m)	Level (m)	Legend	Stratum Description	
Depth (m)	Type	Results					
0.00	HV	HVP=26 kPa	0.20			TOPSOIL: Dark brown slightly sandy slightly gravelly Clay with grass and rootlets.	
0.50	HV	HVP=34 kPa				Soft orangish brown sandy slightly gravelly silty CLAY. Sand is fine to coarse. Gravel is subangular to subrounded fine to coarse.	
			0.70			Firm grey slightly sandy gravelly CLAY with medium subangular to subrounded cobble content. Sand is fine to coarse. Gravel is subangular to subrounded fine to coarse.	1.0
			1.30			OBSTRUCTION at due to rock or boulder	1.5
							2.0
							2.5
							3.0
							3.5
							4.0
							4.5
							5.0

Dimensions		Trench Support and Comment		Termination
Pit Length 2.10	Pit Width 0.90	Pit Stability Stable		Termination Reason Obstruction
		Shoring Used		

Remarks
No groundwater encountered. Pit backfilled upon completion.





GROUND INVESTIGATIONS IRELAND
Geotechnical & Environmental

Trial Pit Log

Project Name: Lissinagroagh Wind Farm		Client: Tobin		Date: 20/11/2025	
Location: Co. Leitrim		Contractor: Ground Investigations Ireland		Co-ords: E593296.60 N841200.00	
Project No. : 15017-09-25		Crew Name: Tom Cull		Equipment: 8T Tracked Excavator	
Location Number TP07	Location Type TP	Level	Logged By MD	Scale 1:25	Page Number Sheet 1 of 1

Sample and In Situ Testing			Depth (m)	Level (m)	Legend	Stratum Description	
Depth (m)	Type	Results					
0.00	HV	HVP=42 kPa	0.30			Dark brown slightly gravelly PEAT with grass and rootlets. Gravel is subangular to subrounded fine to medium.	
0.50 0.50	B HV	HVP=78 kPa				Stiff dark greyish brown slightly sandy slightly gravelly CLAY. Sand is fine to coarse. Gravel is subangular to subrounded fine to coarse.	0.5
1.50	B		1.00			Firm blueish grey slightly sandy slightly gravelly silty CLAY with medium subangular to subrounded cobble content. Sand fine to coarse. Gravel subangular to subrounded fine to coarse.	1.0
			1.90			Firm to stiff dark blueish grey slightly sandy gravelly CLAY with low subrounded to rounded cobble content. Gravel is subangular to subrounded fine to coarse.	2.0
			3.20			OBSTRUCTION at due to rock or boulder	3.0
							3.5
							4.0
							4.5
							5.0

Dimensions		Trench Support and Comment		Termination
Pit Length 2.90	Pit Width 0.90	Pit Stability Stable	Shoring Used	Termination Reason Obstruction

Remarks
No groundwater encountered. Pit backfilled upon completion.





GROUND INVESTIGATIONS IRELAND
Geotechnical & Environmental

Trial Pit Log

Project Name: Lissinagroagh Wind Farm		Client: Tobin		Date: 20/11/2025	
Location: Co. Leitrim		Contractor: Ground Investigations Ireland		Co-ords: E593552.00 N840829.00	
Project No. : 15017-09-25		Crew Name: Tom Cull		Equipment: 8T Tracked Excavator	
Location Number TP08	Location Type TP	Level	Logged By MD	Scale 1:25	Page Number Sheet 1 of 1

Sample and In Situ Testing			Depth (m)	Level (m)	Legend	Stratum Description	
Depth (m)	Type	Results					
0.00	HV	HVP=22 kPa	0.10			Dark brown Slightly sandy clayey PEAT. Sand is fine to coarse.	
0.50	B	HVP=58 kPa				0.70	
1.00	B						Firm to stiff blueish grey slightly sandy gravelly silty CLAY with low subrounded to rounded cobble content. Sand is fine to coarse. Gravel is subrounded to rounded fine to coarse.
							1.5
							2.0
							2.5
			2.70			OBSTRUCTION at due to rock or boulder	3.0
							3.5
							4.0
							4.5
							5.0

Dimensions		Trench Support and Comment		Termination
Pit Length 2.50	Pit Width 0.90	Pit Stability Stable	Shoring Used	Termination Reason Obstruction

Remarks
No groundwater encountered. Pit backfilled upon completion.





GROUND INVESTIGATIONS IRELAND
Geotechnical & Environmental

Trial Pit Log

Project Name: Lissinagroagh Wind Farm		Client: Tobin		Date: 20/11/2025	
Location: Co. Leitrim		Contractor: Ground Investigations Ireland		Co-ords: E593561.00 N840875.50	
Project No. : 15017-09-25		Crew Name: Tom Cull		Equipment: 8T Tracked Excavator	
Location Number TP09	Location Type TP	Level	Logged By MD	Scale 1:25	Page Number Sheet 1 of 1

Sample and In Situ Testing			Depth (m)	Level (m)	Legend	Stratum Description	
Depth (m)	Type	Results					
0.20	HV	HVP=18 kPa	0.20			Dark brown Slightly sandy clayey PEAT with rootlets. Sand is fine to coarse.	
0.50	B					MADEGROUND: Firm blueish grey slightly gravelly silty CLAY with medium glass and fabric content. Gravel is subangular to subrounded fine to coarse.	0.5
0.50	HV	HVP=62 kPa	0.60			Firm blueish grey medium brown slightly sandy slightly gravelly silty CLAY with low subrounded to rounded cobble content. Sand is fine to coarse. Gravel is fine to coarse.	1.0
			1.50			Stiff blueish grey medium brown slightly sandy slightly gravelly silty CLAY with low subrounded to rounded cobble content. Sand is fine to coarse. Gravel is fine to coarse.	1.5
2.00	B		2.40			OBSTRUCTION at due to rock or boulder	2.0
							2.5
							3.0
							3.5
							4.0
							4.5
							5.0

Dimensions		Trench Support and Comment		Termination
Pit Length 2.50	Pit Width 0.90	Pit Stability Stable	Shoring Used	Termination Reason Obstruction

Remarks
No groundwater encountered. Pit backfilled upon completion.





TP01



TP01



TP01



TP03



TP03



TP03



TP04



TP04



TP04



TP05



TP05



TP05



TP06



TP06



TP06



TP07



TP07



TP07



TP08



TP08



TP08



TP09



TP09



TP09

APPENDIX 3 – Hang Auger Records





GROUND INVESTIGATIONS IRELAND
Geotechnical & Environmental

Borehole Log

Project Name: Lissinagroagh Wind Farm		Client: Tobin		Date: 17/11/2025	
Location: Co. Leitrim		Contractor: Ground Investigations Ireland		Co-ords: E590273.00 N842077.00	
Project No. : 15017-09-25		Crew Name: MD&RON		Drilling Equipment: Gouge Auger	
Borehole Number GA04	Hole Type WS	Level	Logged By MD	Scale 1:25	Page Number Sheet 1 of 1

Sample Depth and Type		Casing Diameter	Water Strikes	In Situ Testing Results	Level (m)	Stratum Description	Legend	Well	
Depth (m)	Type								
0.00	D			HVP=18 kPa		Spongy dark brown PEAT.			
0.00	HV				0.10	Firm grey mottled brown slightly sandy slightly gravelly silty CLAY with woody rootlets. Gravel is angular to subangular fine to medium. Sand is fine to coarse.			
0.30	D								
0.50	HV			HVP=41 kPa	0.70				
					1				
					2				
					3				
					4				
					5				

Hole Diameter		Casing Diameter		Chiselling				Inclination and Orientation			
Depth Base	Diameter	Depth Base	Diameter	Depth Top	Depth Base	Duration	Tool	Depth Top	Depth Base	Inclination	Orientation

Remarks
Obstruction due to gravel





GROUND INVESTIGATIONS IRELAND
Geotechnical & Environmental

Borehole Log

Project Name: Lissinagroagh Wind Farm		Client: Tobin		Date: 17/11/2025	
Location: Co. Leitrim		Contractor: Ground Investigations Ireland		Co-ords: E590337.00 N842052.00	
Project No. : 15017-09-25		Crew Name: MD&RON		Drilling Equipment: Gouge Auger	
Borehole Number GA05	Hole Type WS	Level	Logged By MD	Scale 1:25	Page Number Sheet 1 of 1

Sample Depth and Type		Casing Diameter	Water Strikes	In Situ Testing Results	Level (m)	Stratum Description	Legend	Well
Depth (m)	Type							
0.00	D			HVP=20 kPa		Spongy brown fibrous PEAT.		
0.00	HV				0.10	Firm grey mottled brown slightly sandy slightly gravelly silty CLAY. Gravel is angular to subangular fine to medium. Sand is fine to coarse.		
0.50	HV			HVP=41 kPa	0.75			
					1			
					2			
					3			
					4			
					5			

Hole Diameter		Casing Diameter		Chiselling				Inclination and Orientation			
Depth Base	Diameter	Depth Base	Diameter	Depth Top	Depth Base	Duration	Tool	Depth Top	Depth Base	Inclination	Orientation

Remarks
Obstruction due to gravel

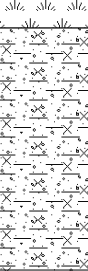




GROUND INVESTIGATIONS IRELAND
Geotechnical & Environmental

Borehole Log

Project Name: Lissinagroagh Wind Farm		Client: Tobin		Date: 17/11/2025	
Location: Co. Leitrim		Contractor: Ground Investigations Ireland		Co-ords: E590730.00 N842392.00	
Project No. : 15017-09-25		Crew Name: MD&RON		Drilling Equipment: Gouge Auger	
Borehole Number GA06	Hole Type WS	Level	Logged By MD	Scale 1:25	Page Number Sheet 1 of 1

Sample Depth and Type		Casing Diameter	Water Strikes	In Situ Testing Results	Level (m)	Stratum Description	Legend	Well
Depth (m)	Type							
0.00	D					0.10 Spongy dark brown fibrous PEAT. Organic. Soft grey mottled brown slightly sandy slightly gravelly silty CLAY. Gravel is angular to subangular fine to medium. Sand is fine to coarse.		
					1			
					2			
					3			
					4			
					5			

Hole Diameter		Casing Diameter		Chiselling				Inclination and Orientation			
Depth Base	Diameter	Depth Base	Diameter	Depth Top	Depth Base	Duration	Tool	Depth Top	Depth Base	Inclination	Orientation

Remarks
Obstruction due to gravel





GROUND INVESTIGATIONS IRELAND
Geotechnical & Environmental

Borehole Log

Project Name: Lissinagroagh Wind Farm		Client: Tobin		Date: 17/11/2025	
Location: Co. Leitrim		Contractor: Ground Investigations Ireland		Co-ords: E590764.00 N842446.00	
Project No. : 15017-09-25		Crew Name: MD&RON		Drilling Equipment: Gouge Auger	
Borehole Number GA07	Hole Type WS	Level	Logged By MD	Scale 1:25	Page Number Sheet 1 of 1

Sample Depth and Type		Casing Diameter	Water Strikes	In Situ Testing Results	Level (m)	Stratum Description	Legend	Well
Depth (m)	Type							
0.00	D					0.10 Spongy dark brown fibrous PEAT. Soft grey mottled brown slightly sandy slightly gravelly silty CLAY. Gravel is subangular to angular fine to medium. Sand is fine to coarse.		
					1			
					2			
					3			
					4			
					5			

Hole Diameter		Casing Diameter		Chiselling				Inclination and Orientation			
Depth Base	Diameter	Depth Base	Diameter	Depth Top	Depth Base	Duration	Tool	Depth Top	Depth Base	Inclination	Orientation

Remarks
Obstruction due to gravel





GROUND INVESTIGATIONS IRELAND
Geotechnical & Environmental

Borehole Log

Project Name: Lissinagroagh Wind Farm		Client: Tobin		Date: 17/11/2025	
Location: Co. Leitrim		Contractor: Ground Investigations Ireland		Co-ords: E591281.10 N842363.10	
Project No. : 15017-09-25		Crew Name: MD&RON		Drilling Equipment: Gouge Auger	
Borehole Number GA08	Hole Type WS	Level	Logged By MD	Scale 1:25	Page Number Sheet 1 of 1

Sample Depth and Type		Casing Diameter	Water Strikes	In Situ Testing Results	Level (m)	Stratum Description	Legend	Well
Depth (m)	Type							
0.00	D			HVP=25 kPa		Spongy brown fibrous PEAT.		
0.00	HV				0.15	Firm dark brown slightly sandy clayey PEAT. Sand is fine to coarse.		
0.50	HV			HVP=39 kPa	0.40	Firm grey mottled brown slightly sandy peaty silty CLAY. Sand is fine to coarse.		
					1 1.00			
					2			
					3			
					4			
					5			

Hole Diameter		Casing Diameter		Chiselling				Inclination and Orientation			
Depth Base	Diameter	Depth Base	Diameter	Depth Top	Depth Base	Duration	Tool	Depth Top	Depth Base	Inclination	Orientation

Remarks
Obstruction due to gravel





GROUND INVESTIGATIONS IRELAND
Geotechnical & Environmental

Borehole Log

Project Name: Lissinagroagh Wind Farm		Client: Tobin		Date: 17/11/2025	
Location: Co. Leitrim		Contractor: Ground Investigations Ireland		Co-ords: E593162.50 N841059.50	
Project No. : 15017-09-25		Crew Name: MD&RON		Drilling Equipment: Gouge Auger	
Borehole Number GA09	Hole Type WS	Level	Logged By MD	Scale 1:25	Page Number Sheet 1 of 1

Sample Depth and Type		Casing Diameter	Water Strikes	In Situ Testing Results	Level (m)	Stratum Description	Legend	Well
Depth (m)	Type							
0.00	D			HVP=39 kPa		Spongy brown fibrous PEAT.		
0.00	HV				0.10	Firm dark brownish grey slightly sandy clayey PEAT. Sand is fine to coarse		
0.30	D				0.20	Stiff grey mottled brown slightly sandy slightly gravelly silty CLAY. Gravel is angular to subangular fine to coarse. Sand is fine to coarse.		
0.50	HV			HVP=90 kPa	0.50			
					1			
					2			
					3			
					4			
					5			

Hole Diameter		Casing Diameter		Chiselling			Inclination and Orientation				
Depth Base	Diameter	Depth Base	Diameter	Depth Top	Depth Base	Duration	Tool	Depth Top	Depth Base	Inclination	Orientation

Remarks
Obstruction due to gravel





GROUND INVESTIGATIONS IRELAND
Geotechnical & Environmental

Borehole Log

Project Name: Lissinagroagh Wind Farm		Client: Tobin		Date: 17/11/2025	
Location: Co. Leitrim		Contractor: Ground Investigations Ireland		Co-ords: E593208.10 N841068.80	
Project No. : 15017-09-25		Crew Name: MD&RON		Drilling Equipment:	
Borehole Number GA10	Hole Type WS	Level	Logged By MD	Scale 1:25	Page Number Sheet 1 of 1

Sample Depth and Type		Casing Diameter	Water Strikes	In Situ Testing Results	Level (m)	Stratum Description	Legend	Well
Depth (m)	Type							
0.00	D			HVP=60 kPa	0.10	Spongy brown fibrous PEAT.		
0.00	HV					Firm dark brown slightly sandy clayey PEAT. Sand is fine to coarse.		
1.00	D				1.00	Stiff grey mottled brown slightly sandy slightly gravelly silty CLAY Gravel is angular to subangular fine to medium. Sand is fine to coarse.		
1.20	HV			HVP=82 kPa	1.20			
					2			
					3			
					4			
					5			

Hole Diameter		Casing Diameter		Chiselling				Inclination and Orientation			
Depth Base	Diameter	Depth Base	Diameter	Depth Top	Depth Base	Duration	Tool	Depth Top	Depth Base	Inclination	Orientation

Remarks
Obstruction due to gravel





GROUND INVESTIGATIONS IRELAND
Geotechnical & Environmental

Borehole Log

Project Name: Lissinagroagh Wind Farm		Client: Tobin		Date: 17/11/2025	
Location: Co. Leitrim		Contractor: Ground Investigations Ireland		Co-ords: E593227.80 N841098.30	
Project No. : 15017-09-25		Crew Name: MD&RON		Drilling Equipment: Gouge Auger	
Borehole Number GA11	Hole Type WS	Level	Logged By MD	Scale 1:25	Page Number Sheet 1 of 1

Sample Depth and Type		Casing Diameter	Water Strikes	In Situ Testing Results	Level (m)	Stratum Description	Legend	Well
Depth (m)	Type							
0.00	D			HVP=29 kPa	0.10	Spongy dark brown fibrous PEAT.		
0.00	HV					Stiff grey mottled brown slightly sandy slightly gravelly silty CLAY Gravel is angular to subangular fine to medium. Sand is fine to coarse.		
0.30	HV			HVP=79 kPa	0.30			
					1			
					2			
					3			
					4			
					5			

Hole Diameter		Casing Diameter		Chiselling				Inclination and Orientation			
Depth Base	Diameter	Depth Base	Diameter	Depth Top	Depth Base	Duration	Tool	Depth Top	Depth Base	Inclination	Orientation

Remarks
Obstruction due to gravel





GROUND INVESTIGATIONS IRELAND
Geotechnical & Environmental

Borehole Log

Project Name: Lissinagroagh Wind Farm		Client: Tobin		Date: 17/11/2025	
Location: Co. Leitrim		Contractor: Ground Investigations Ireland		Co-ords: E593187.40 N841113.00	
Project No. : 15017-09-25		Crew Name: MD&RON		Drilling Equipment: Gouge Auger	
Borehole Number GA12	Hole Type WS	Level	Logged By MD	Scale 1:25	Page Number Sheet 1 of 1

Sample Depth and Type		Casing Diameter	Water Strikes	In Situ Testing Results	Level (m)	Stratum Description	Legend	Well
Depth (m)	Type							
0.00	D			HVP=19 kPa				
0.00	HV				0.10	Spongy dark brown fibrous PEAT.		
					0.50	Soft dark brown slightly sandy clayey fibrous PEAT. Sand is fine to coarse.		
					1.00	Firm grey mottled brown slightly sandy silty CLAY. Sand is fine to coarse.		
1.20	HV			HVP=65 kPa	1.20	Firm grey mottled brown slightly sandy slightly gravelly silty CLAY Gravel is angular to subangular fine to coarse. Sand is fine to coarse.		
					2			
					3			
					4			
					5			

Hole Diameter		Casing Diameter		Chiselling				Inclination and Orientation			
Depth Base	Diameter	Depth Base	Diameter	Depth Top	Depth Base	Duration	Tool	Depth Top	Depth Base	Inclination	Orientation

Remarks
Obstruction due to gravel





GROUND INVESTIGATIONS IRELAND
Geotechnical & Environmental

Borehole Log

Project Name: Lissinagroagh Wind Farm		Client: Tobin		Date: 17/11/2025	
Location: Co. Leitrim		Contractor: Ground Investigations Ireland		Co-ords: E593193.60 N841149.70	
Project No. : 15017-09-25		Crew Name: MD&RON		Drilling Equipment: Gouge Auger	
Borehole Number GA13	Hole Type WS	Level	Logged By MD	Scale 1:25	Page Number Sheet 1 of 1

Sample Depth and Type		Casing Diameter	Water Strikes	In Situ Testing Results	Level (m)	Stratum Description	Legend	Well
Depth (m)	Type							
0.00	D			HVP=41 kPa		Spongy dark brown fibrous PEAT.		
0.00	HV				0.15	Firm dark brown slightly sandy clayey PEAT. Very organic.		
0.50	D				0.50	Stiff grey mottled brown slightly sandy slightly gravelly silty CLAY Gravel is angular to subangular fine to coarse. Sand is fine to coarse.		
0.80	HV			HVP=89 kPa				
					1			
					1.20			
					2			
					3			
					4			
					5			

Hole Diameter		Casing Diameter		Chiselling				Inclination and Orientation			
Depth Base	Diameter	Depth Base	Diameter	Depth Top	Depth Base	Duration	Tool	Depth Top	Depth Base	Inclination	Orientation

Remarks
Obstruction due to gravel





GROUND INVESTIGATIONS IRELAND
Geotechnical & Environmental

Borehole Log

Project Name: Lissinagroagh Wind Farm	Client: Tobin	Date: 17/11/2025
Location: Co. Leitrim	Contractor: Ground Investigations Ireland	Co-ords: E593193.60 N841150.00
Project No. : 15017-09-25	Crew Name: MD&RON	Drilling Equipment: Gouge Auger

Borehole Number GA14	Hole Type WS	Level	Logged By MD	Scale 1:25	Page Number Sheet 1 of 1
-------------------------	-----------------	-------	-----------------	---------------	-----------------------------

Sample Depth and Type		Casing Diameter	Water Strikes	In Situ Testing Results	Level (m)	Stratum Description	Legend	Well
Depth (m)	Type							
0.00	D			HVP=93 kPa		Spongy dark brown PEAT.		
0.00	HV				0.15	Stiff grey mottled brown slightly sandy slightly gravelly silty CLAY. Gravel is angular to subangular fine to coarse. Sand is fine to coarse.		
					0.30			
					1			
					2			
					3			
					4			
					5			

Hole Diameter		Casing Diameter		Chiselling				Inclination and Orientation			
Depth Base	Diameter	Depth Base	Diameter	Depth Top	Depth Base	Duration	Tool	Depth Top	Depth Base	Inclination	Orientation

Remarks
Obstruction due to gravel





GROUND INVESTIGATIONS IRELAND
Geotechnical & Environmental

Borehole Log

Project Name: Lissinagroagh Wind Farm	Client: Tobin	Date: 17/11/2025
Location: Co. Leitrim	Contractor: Ground Investigations Ireland	Co-ords: E593205.00 N840974.00
Project No. : 15017-09-25	Crew Name: MD&RON	Drilling Equipment: Gouge Auger

Borehole Number GA15	Hole Type WS	Level	Logged By MD	Scale 1:25	Page Number Sheet 1 of 1
-------------------------	-----------------	-------	-----------------	---------------	-----------------------------

Sample Depth and Type		Casing Diameter	Water Strikes	In Situ Testing Results	Level (m)	Stratum Description	Legend	Well
Depth (m)	Type							
0.00	D			HVP=58 kPa		Spongy brown fibrous PEAT.		
0.00	HV				0.10	Soft to firm dark brown to grey slightly sandy CLAY. Sand is fine to coarse.		
					0.30	Firm dark brown to grey slightly sandy peaty silty CLAY. Sand is fine to coarse.		
0.50	D				0.50	Stiff grey mottled brown slightly sandy gravelly silty CLAY Gravel is angular to subangular fine to coarse. Sand is fine to coarse.		
0.70	HV			HVP=96 kPa				
					1			
					1.20			
					2			
					3			
					4			
					5			

Hole Diameter		Casing Diameter		Chiselling				Inclination and Orientation			
Depth Base	Diameter	Depth Base	Diameter	Depth Top	Depth Base	Duration	Tool	Depth Top	Depth Base	Inclination	Orientation

Remarks
Obstruction due to gravel





GROUND INVESTIGATIONS IRELAND
Geotechnical & Environmental

Borehole Log

Project Name: Lissinagroagh Wind Farm	Client: Tobin	Date: 17/11/2025
Location: Co. Leitrim	Contractor: Ground Investigations Ireland	Co-ords: E593421.00 N840881.00
Project No. : 15017-09-25	Crew Name: MD&RON	Drilling Equipment: Gouge Auger

Borehole Number GA16	Hole Type WS	Level	Logged By MD	Scale 1:25	Page Number Sheet 1 of 1
-------------------------	-----------------	-------	-----------------	---------------	-----------------------------

Sample Depth and Type		Casing Diameter	Water Strikes	In Situ Testing Results	Level (m)	Stratum Description	Legend	Well
Depth (m)	Type							
0.00	HV			HVP=29 kPa	0.10	Spongy brown fibrous PEAT.		
0.50	HV			HVP=34 kPa	0.50	Soft to firm grey mottled brown slightly sandy clayey PEAT. Sand is fine to coarse.		
					1			
					2			
					3			
					4			
					5			

Hole Diameter		Casing Diameter		Chiselling				Inclination and Orientation			
Depth Base	Diameter	Depth Base	Diameter	Depth Top	Depth Base	Duration	Tool	Depth Top	Depth Base	Inclination	Orientation

Remarks
Obstruction due to gravel





GROUND INVESTIGATIONS IRELAND
Geotechnical & Environmental

Borehole Log

Project Name: Lissinagroagh Wind Farm	Client: Tobin	Date: 17/11/2025
Location: Co. Leitrim	Contractor: Ground Investigations Ireland	Co-ords: E593481.00 N840867.00
Project No. : 15017-09-25	Crew Name: MD&RON	Drilling Equipment:

Borehole Number GA17	Hole Type WS	Level	Logged By MD	Scale 1:25	Page Number Sheet 1 of 1
-------------------------	-----------------	-------	-----------------	---------------	-----------------------------

Sample Depth and Type		Casing Diameter	Water Strikes	In Situ Testing Results	Level (m)	Stratum Description	Legend	Well
Depth (m)	Type							
0.00	D			HVP=18 kPa		Spongy dark brown fibrous PEAT.		
0.00	HV				0.15	Stiff dark brown clayey PEAT.		
0.50	HV			HVP=80 kPa	0.70	Firm to stiff grey mottled brown slightly sandy silty CLAY Sand is fine to coarse.		
					1			
					1.80			
					2			
					3			
					4			
					5			

Hole Diameter		Casing Diameter		Chiselling				Inclination and Orientation			
Depth Base	Diameter	Depth Base	Diameter	Depth Top	Depth Base	Duration	Tool	Depth Top	Depth Base	Inclination	Orientation

Remarks
Obstruction due to gravel





GROUND INVESTIGATIONS IRELAND
Geotechnical & Environmental

Borehole Log

Project Name: Lissinagroagh Wind Farm		Client: Tobin		Date: 17/11/2025	
Location: Co. Leitrim		Contractor: Ground Investigations Ireland		Co-ords: E593549.00 N840837.00	
Project No. : 15017-09-25		Crew Name: MD&RON		Drilling Equipment:	
Borehole Number GA18	Hole Type WS	Level	Logged By MD	Scale 1:25	Page Number Sheet 1 of 1

Sample Depth and Type		Casing Diameter	Water Strikes	In Situ Testing Results	Level (m)	Stratum Description	Legend	Well
Depth (m)	Type							
0.00	D			HVP=62 kPa	0.05	Spongy brown fibrous PEAT. Firm to stiff brown sandy slightly gravelly CLAY with a low angular to subangular cobble content. Gravel is subangular to subrounded fine to coarse. Sand is fine to coarse.		
0.00	HV				0.20			
					1			
					2			
					3			
					4			
					5			

Hole Diameter		Casing Diameter		Chiselling				Inclination and Orientation			
Depth Base	Diameter	Depth Base	Diameter	Depth Top	Depth Base	Duration	Tool	Depth Top	Depth Base	Inclination	Orientation

Remarks
Obstruction due to gravel





GROUND INVESTIGATIONS IRELAND
Geotechnical & Environmental

Borehole Log

Project Name: Lissinagroagh Wind Farm Client: Tobin Date: 17/11/2025

Location: Co. Leitrim Contractor: Ground Investigations Ireland Co-ords: E593523.00 N840862.00

Project No. : 15017-09-25 Crew Name: MD&RON Drilling Equipment:

Borehole Number: GA19 Hole Type: WS Level: Logged By: MD Scale: 1:25 Page Number: Sheet 1 of 1

Sample Depth and Type		Casing Diameter	Water Strikes	In Situ Testing Results	Level (m)	Stratum Description	Legend	Well
Depth (m)	Type							
0.00	D			HVP=29 kPa		Spongy brown fibrous PEAT.		
0.00	HV				0.10	Firm grey mottled brown slightly sandy gravelly silty CLAY. Gravel is angular to subangular fine to coarse. Sand is fine to coarse.		
0.30	HV			HVP=55 kPa	0.30			
					1			
					2			
					3			
					4			
					5			

Hole Diameter		Casing Diameter		Chiselling				Inclination and Orientation			
Depth Base	Diameter	Depth Base	Diameter	Depth Top	Depth Base	Duration	Tool	Depth Top	Depth Base	Inclination	Orientation

Remarks
Obstruction due to gravel





GROUND INVESTIGATIONS IRELAND
Geotechnical & Environmental

Borehole Log

Project Name: Lissinagroagh Wind Farm		Client: Tobin		Date: 17/11/2025	
Location: Co. Leitrim		Contractor: Ground Investigations Ireland		Co-ords: E593549.00 N840882.60	
Project No. : 15017-09-25		Crew Name: MD&RON		Drilling Equipment:	
Borehole Number GA20	Hole Type WS	Level	Logged By MD	Scale 1:25	Page Number Sheet 1 of 1

Sample Depth and Type		Casing Diameter	Water Strikes	In Situ Testing Results	Level (m)	Stratum Description	Legend	Well
Depth (m)	Type							
0.00	D			HVP=28 kPa	0.05	Spongy brown fibrous PEAT. Firm to stiff grey mottled brown slightly sandy slightly gravelly silty CLAY. Gravel is angular to subangular fine to coarse. Sand is fine to coarse.		
0.00	HV							
0.50	HV			HVP=68 kPa	1.30			
					1			
					2			
					3			
					4			
					5			

Hole Diameter		Casing Diameter		Chiselling				Inclination and Orientation			
Depth Base	Diameter	Depth Base	Diameter	Depth Top	Depth Base	Duration	Tool	Depth Top	Depth Base	Inclination	Orientation

Remarks
Obstruction due to gravel



GOUGE AUGER PHOTOS LISSINAGROAGH WIND FARM



GA04



GA05

GOUGE AUGER PHOTOS LISSINAGROAGH WIND FARM



GA06



GA07

GOUGE AUGER PHOTOS LISSINAGROAGH WIND FARM



GA08

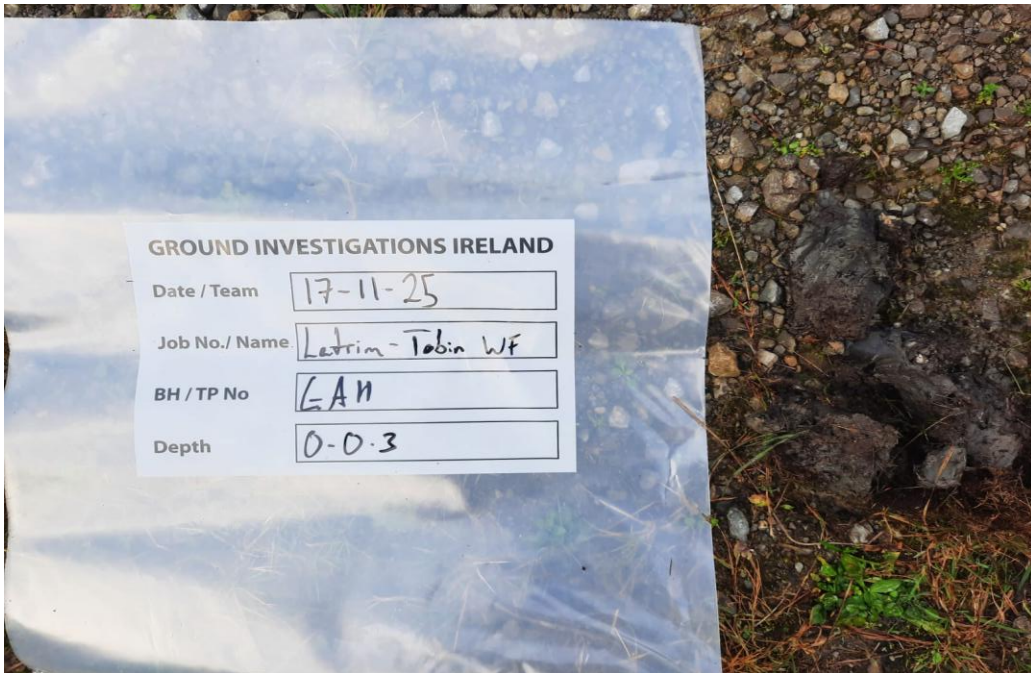


GA09

GOUGE AUGER PHOTOS LISSINAGROAGH WIND FARM



GA10

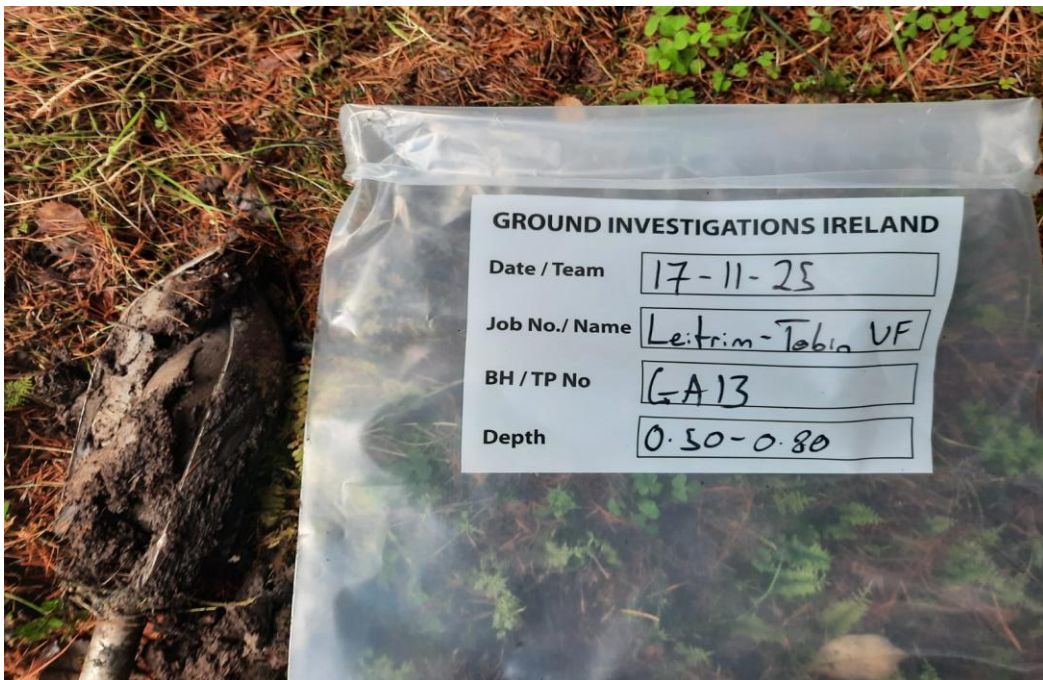


GA11

GOUGE AUGER PHOTOS LISSINAGROAGH WIND FARM



GA12

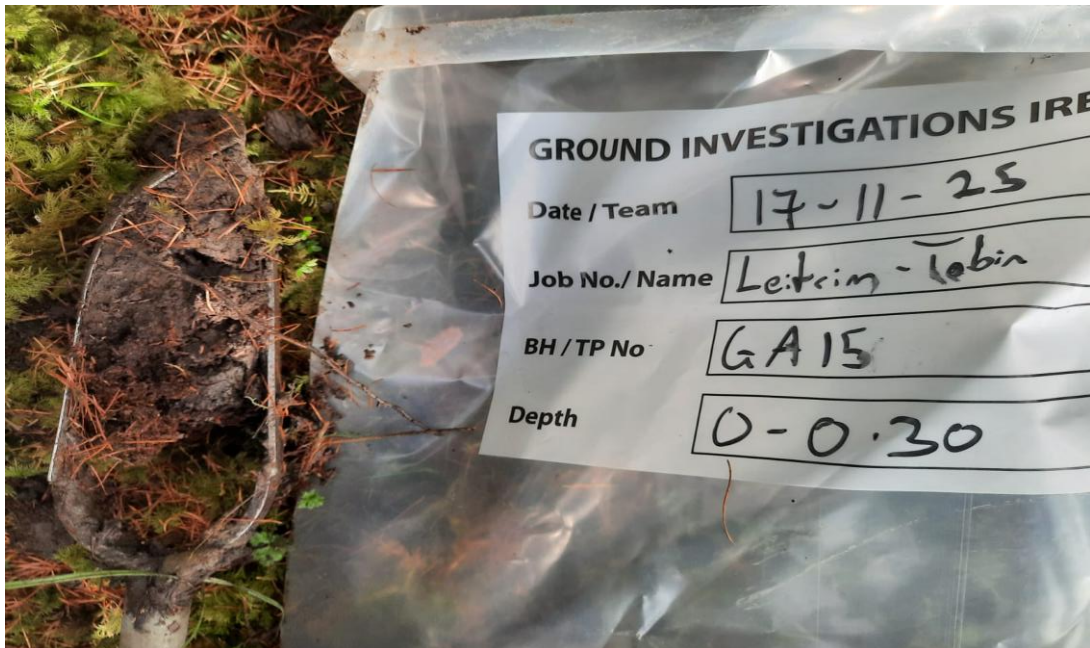


GA13

GOUGE AUGER PHOTOS LISSINAGROAGH WIND FARM



GA14



GA15

GOUGE AUGER PHOTOS LISSINAGROAGH WIND FARM



GA17



GA18

GOUGE AUGER PHOTOS LISSINAGROAGH WIND FARM



GA19



GA20

APPENDIX 4 – Peat Probe Records



Peat Probes

Lissinagroagh Wind Farm - Tobin

Peat Probe No.	Depth of Peat Probe (m BGL)	Easting	Northing	No. Attempts	Date
PP01-01	0.30	592273	844183	5	13/11/2025
PP01-02	0.28	592234	844188	4	13/11/2025
PP01-03	0.24	592194	844194	5	13/11/2025
PP01-04	0.82	592154	844199	3	13/11/2025
PP01-05	0.90	592115	844205	2	13/11/2025
PP01-06	0.67	592080	844188	2	13/11/2025
PP01-07	4.50	592045	844168	3	13/11/2025
PP01-08	2.76	592010	844148	3	13/11/2025
PP01-09	2.66	591976	844127	3	13/11/2025
PP01-10	1.02	591941	844107	3	13/11/2025
PP01-11	1.56	591907	844087	3	13/11/2025
PP01-12	1.44	591870	844073	3	13/11/2025
PP01-13	1.39	591831	844067	3	13/11/2025
PP01-14	2.41	591792	844070	3	13/11/2025
PP01-15	2.41	591760	844080	3	13/11/2025
PP01-16	2.70	591723	844096	3	13/11/2025
PP01-17	2.48	591686	844112	3	13/11/2025
PP01-18	2.30	591650	844129	3	13/11/2025
PP02-01	0.10	592286	844186	3	13/11/2025
PP02-02	0.97	592275	844224	3	13/11/2025
PP02-03	0.76	592311	844238	3	13/11/2025
PP02-04	1.74	592349	844251	3	13/11/2025
PP02-05	3.33	592387	844263	3	13/11/2025
PP02-06	1.09	592425	844276	3	13/11/2025
PP02-07	2.76	592463	844289	3	13/11/2025
PP02-08	0.78	592501	844302	3	13/11/2025
PP02-09	0.31	592538	844314	4	13/11/2025
PP02-10	0.52	592576	844327	3	13/11/2025
PP03-01	0.53	592355	843664	4	13/11/2025
PP03-02	0.68	592389	843643	3	13/11/2025
PP03-03	0.43	592426	843627	3	13/11/2025
PP04-01	0.10	592303	843605	4	13/11/2025
PP04-02	0.64	592271	843581	3	13/11/2025
PP04-03	0.32	592239	843557	3	13/11/2025
PP04-04	0.54	592218	843524	3	13/11/2025
PP04-05	0.92	592190	843496	3	13/11/2025
PP05-01	0.92	590783	842483	3	13/11/2025
PP05-02	1.02	590765	842447	3	13/11/2025
PP05-03	0.19	590744	842414	3	13/11/2025
PP06-01	0.19	591404	841904	3	13/11/2025
PP06-02	1.17	591418	841941	3	13/11/2025
PP06-03	0.96	591432	841979	3	13/11/2025
PP06-04	1.02	591445	842016	3	13/11/2025
PP06-05	1.10	591459	842054	3	13/11/2025
PP06-06	0.34	591473	842091	5	13/11/2025
PP06-07	1.12	591484	842130	3	13/11/2025
PP06-08	0.76	591495	842168	4	13/11/2025
PP07-01	0.68	592201	842332	3	13/11/2025
PP07-02	1.40	592164	842316	6	13/11/2025
PP07-03	1.90	592128	842299	3	13/11/2025
PP07-04	2.80	592091	842283	3	13/11/2025
PP08-01	0.35	589991	841852	5	13/11/2025
PP08-02	1.04	590030	841845	3	13/11/2025
PP08-03	0.53	590069	841838	3	13/11/2025
PP08-04	0.27	590109	841830	3	13/11/2025
PP09-01	0.50	589991	842042	3	14/11/2025
PP09-02	0.52	590069	842070	3	14/11/2025
PP10-01	0.94	590496	842066	3	13/11/2025
PP10-02	0.82	590481	842029	3	13/11/2025
PP10-03	0.40	590466	841992	4	13/11/2025

APPENDIX 5 - Rotary Borehole Records





GROUND INVESTIGATIONS IRELAND
Geotechnical & Environmental

Rotary Core Log

Project Name: Lissinagroagh Wind Farm	Client: Tobin	Date: 22/10/2025
Location: Co. Leitrim	Contractor: Ground Investigations Ireland	Co-ords: E592767.00 N841097.00
Project No. : 15017-09-25	Crew Name: GH&PM	Drilling Equipment: Beretta T47

Borehole Number BH01	Hole Type RC	Level 223.77m AoD	Logged By MD	Scale 1:50	Page Number Sheet 1 of 2
-------------------------	-----------------	----------------------	-----------------	---------------	-----------------------------

Sample Depth and Type		Coring			Type / Fl	In Situ Testing Results	Level (m)		Stratum Description	Legend	Well
Depth (m)	Type	TCR	SCR	RQD							
0.00							223.57	0.20	TOPSOIL		
									Recovery consists of fragments of Gravel and Cobbles and wood. Driller Notes: Cobbles and wood fragments.		
2.30	SPT	4	0	0		N=11 (1,1/3,2,3,3)	221.47	2.30	Recovery consists of dark grey slightly sandy gravelly CLAY. Sand is fine to coarse. Gravel is angular to subangular fine to coarse. Drillers note Clay (Firm)		
2.30											
3.80	SPT	6	0	0		N=13 (3,3/2,2,2,7)					
3.80											
5.30	SPT	10	0	0		N=32 (2,3/5,5,9,13)	218.47	5.30	Stiff dark grey slightly sandy gravelly CLAY. Sand is fine to coarse. Gravel is angular to subangular fine to coarse.		
5.30											
6.80	SPT	93	0	0		N=34 (3,5/5,9,11,9)	216.97	6.80	Recovery consists of Dark grey slightly sandy slightly gravelly CLAY. Sand is fine to coarse. Gravel is angular to subangular fine to coarse. Driller Notes: CLay (Stiff)		
6.80											
8.30	SPT	33	0	0		N=50 (4,5/50 for 265mm)					
8.30											
9.80							213.97	9.80	Strong grey to dark grey thinly to thickly laminated fine to medium grained SANDSTONE with some dark grey clay infills. Distinctly weathered.		
9.80											

Hole Diameter		Casing Diameter		Chiselling				Inclination and Orientation				Drilling Flush					
Depth Base	Diameter	Depth Base	Diameter	Depth Top	Depth Base	Duration	Tool	Depth Top	Depth Base	Inclination	Orientation	Depth Top	Depth Base	Type	Colour	Min (%)	Max (%)
12.80	96	12.80	96														

Remarks
 No Groundwater encountered.
 50mm plain standpipe installed from GL to 9.00m BGL. Slotted standpipe installed from 9m to 12.80m BGL. Backfilled with bentonite seal.





GROUND INVESTIGATIONS IRELAND
Geotechnical & Environmental

Rotary Core Log

Project Name: Lissinagroagh Wind Farm		Client: Tobin		Date: 22/10/2025		
Location: Co. Leitrim		Contractor: Ground Investigations Ireland		Co-ords: E592767.00 N841097.00		
Project No. : 15017-09-25		Crew Name: GH&PM		Drilling Equipment: Beretta T47		
Borehole Number BH01	Hole Type RC	Level 223.77m AoD		Logged By MD	Scale 1:50	Page Number Sheet 2 of 2

Sample Depth and Type		Coring			Type / Fl	In Situ Testing Results	Level (m)		Stratum Description	Legend	Well
Depth (m)	Type	TCR	SCR	RQD							
10.45					14	213.32	10.4	<p>9.80m to 10.45m - Two fracture sets: F1: Close to medium spaced 10-20 degrees, undulating rough frequent orange staining. F2: closely spaced, 70-90 degrees undulating rough. Frequent orange staining.</p> <p>Grey mottled orange residual soil of SANDSTONE.</p> <p>Medium strong yellowish brown medium to coarse grained thickly bedded SANDSTONE with light brown clay infill at 11.45m. Clay is slightly sandy.</p> <p>Medium strong yellowish brown medium to coarse grained thickly bedded SANDSTONE distinctly weathered with 70-90 degree infilled fracture 30-50mm thick. Infilled with light brown CLAY</p> <p>10.70m to 12.80m - Two fracture sets: F1: widely spaced 10-20 degree undulating rough. F2: close to medium spaced 70-90 degree undulating rough with 50mm thick CLAY infill</p>			
10.70		100	93	63	N.I	213.07	5				
11.30					4		11				
11.60						212.17	11.6				
		100	43	17	3		12				
						210.97	12.8				
							13				
							14				
							15				
							16				
							17				
							18				
							19				
							20				

Hole Diameter		Casing Diameter		Chiselling				Inclination and Orientation				Drilling Flush					
Depth Base	Diameter	Depth Base	Diameter	Depth Top	Depth Base	Duration	Tool	Depth Top	Depth Base	Inclination	Orientation	Depth Top	Depth Base	Type	Colour	Min (%)	Max (%)
12.80	96	12.80	96														

Remarks
 No Groundwater encountered.
 50mm plain standpipe installed from GL to 9.00m BGL. Slotted standpipe installed from 9m to 12.80m BGL. Backfilled with bentonite seal.





GROUND INVESTIGATIONS IRELAND
Geotechnical & Environmental

Rotary Core Log

Project Name: Lissinagroagh Wind Farm	Client: Tobin	Date: 22/10/2025 - 22/11/2025
Location: Co. Leitrim	Contractor: Ground Investigations Ireland	Co-ords: E592785.70 N841030.40
Project No. : 15017-09-25	Crew Name: GH&PM	Drilling Equipment: Beretta T47

Borehole Number BH02	Hole Type RC	Level 218.89m AoD	Logged By MD	Scale 1:50	Page Number Sheet 1 of 2
-------------------------	-----------------	----------------------	-----------------	---------------	-----------------------------

Sample Depth and Type		Coring			Type / Fl	In Situ Testing Results	Level (m)		Stratum Description	Legend	Well
Depth (m)	Type	TCR	SCR	RQD							
0.00								218.69	0.20	Spongy Dark brown clayey fibrous PEAT with wooden rootlets.	
								218.19	0.70	Grey mottled brown slightly sandy CLAY. Sand is fine to coarse.	
		39	7	0				1		Recovery consists of grey slightly sandy gravelly CLAY with medium coble and boulder content	
2.30	SPT					N=32 (2,3/5,5,9,13)		216.59	2.30	Weathered Rock recovered as Grey GRAVEL to BOULDER sized fragments of SANDSTONE with some grey brown slightly sandy gravelly CLAY	
2.30		80	40	23				3			
3.80	SPT					50 (3,7/50 for 180mm)		4			
3.80		73	17	67				5			
5.30	SPT					50 (8,13/50 for 125mm)		6			
5.30								6			
6.10		93	67	63				212.79	6.10	Very strong grey fine to coarse grained thickly bedded SANDSTONE with rare calcite veins and frequent orange staining. Slightly weathered.	
6.80								212.09	6.80	No Recovery (Possible Cavity)	
6.80		40	30	30		No Rec		7			
7.90								210.99	7.90	Very strong grey fine to coarse grained thickly bedded SANDSTONE with rare calcite veins and frequent orange staining. Slightly weathered.	
8.30								9		6.10m to 10.00m - Three fracture sets. F1: closely spaced 0-10 degrees smooth to undulating. F2: medium to widely spaced 10-30 degrees undulating. F3: widely spaced 80-90 degrees undulating rough.	
9.80		100	57	38		28		10			
10.00								208.89	10		

Hole Diameter		Casing Diameter		Chiselling				Inclination and Orientation				Drilling Flush					
Depth Base	Diameter	Depth Base	Diameter	Depth Top	Depth Base	Duration	Tool	Depth Top	Depth Base	Inclination	Orientation	Depth Top	Depth Base	Type	Colour	Min (%)	Max (%)
12.80	96	12.80	96														

Remarks
No groundwater encountered. Borehole backfilled upon completion.





GROUND INVESTIGATIONS IRELAND
Geotechnical & Environmental

Rotary Core Log

Project Name: Lissinagroagh Wind Farm	Client: Tobin	Date: 22/10/2025 - 22/11/2025
Location: Co. Leitrim	Contractor: Ground Investigations Ireland	Co-ords: E592785.70 N841030.40
Project No. : 15017-09-25	Crew Name: GH&PM	Drilling Equipment: Beretta T47

Borehole Number BH02	Hole Type RC	Level 218.89m AoD	Logged By MD	Scale 1:50	Page Number Sheet 2 of 2
-------------------------	-----------------	----------------------	-----------------	---------------	-----------------------------

Sample Depth and Type		Coring			Type / Fl	In Situ Testing Results	Level (m)		Stratum Description	Legend	Well
Depth (m)	Type	TCR	SCR	RQD							
11.30		100	73	40	13			10.00 11 12	Very strong grey fine to medium grained thinly laminated to thickly bedded SANDSTONE interbedded with dark grey fine grained thinly bedded SILTSTONE. Rock is moderately weathered with rare orange staining and some pyrite. <i>10.00m to 12.80m - Three fracture sets. F1: closely spaced 0-10 degrees undulating. F2: medium spaced 30-40. medium spaced undulating F3: medium to widely spaced 80-90 degree undulating rough</i>	
		67	43	43							
							206.09	12.80 13 14 15 16 17 18 19 20			

Hole Diameter		Casing Diameter		Chiselling				Inclination and Orientation				Drilling Flush					
Depth Base	Diameter	Depth Base	Diameter	Depth Top	Depth Base	Duration	Tool	Depth Top	Depth Base	Inclination	Orientation	Depth Top	Depth Base	Type	Colour	Min (%)	Max (%)
12.80	96	12.80	96														

Remarks
No groundwater encountered. Borehole backfilled upon completion.



Lissinagroagh Rotary Core Photographs

BH01



Lissinagroagh Rotary Core Photographs

BH01



GROUND INVESTIGATIONS IRELAND
Geotechnical & Environmental

Client: Tobin

Job Ref: 15017-09-25

Site: Lissinagroagh Wind Farm

Date: 26-11-2025

Borehole ref: BH01

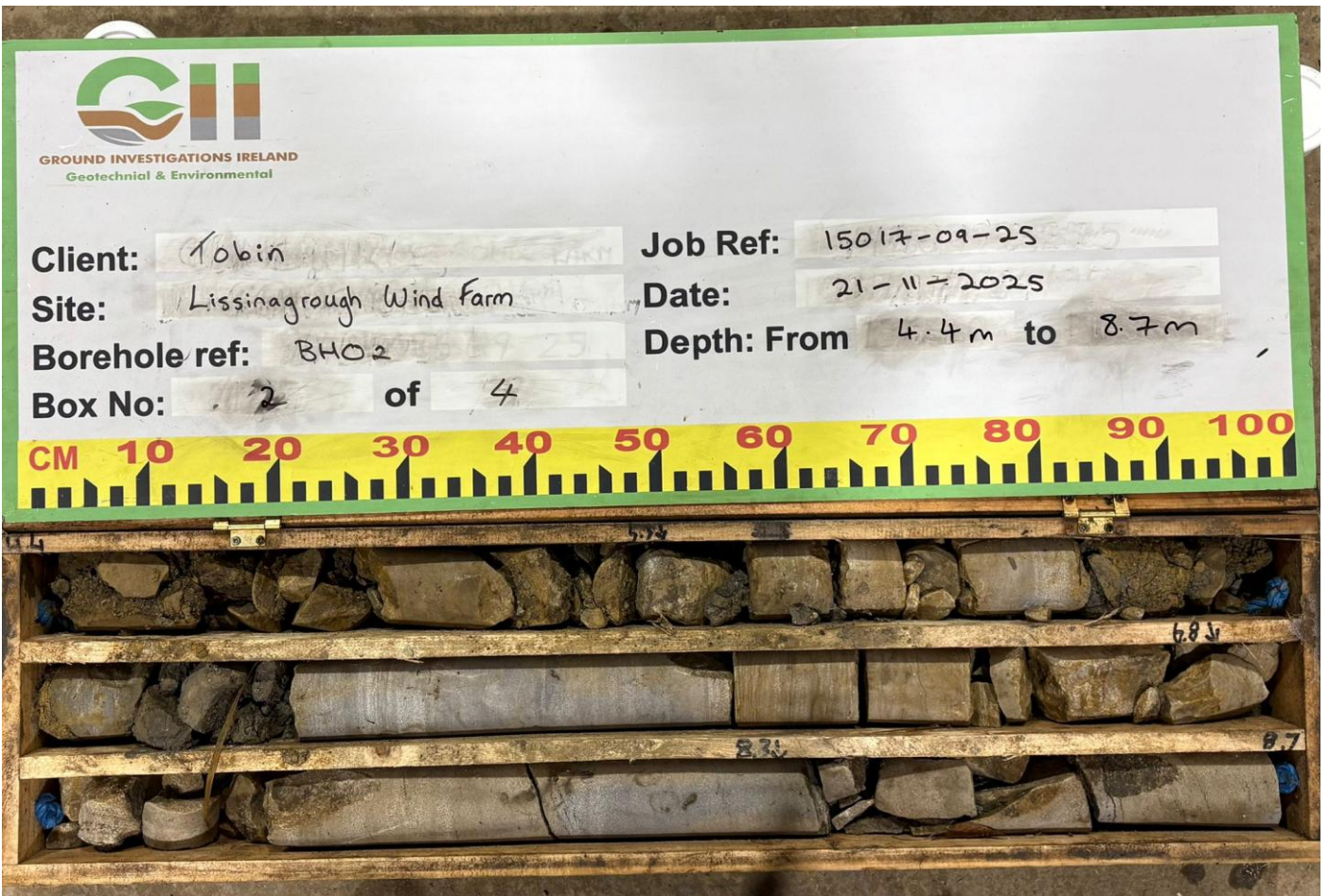
Depth: From 11.80m to 12.80m

Box No: 3 of 3



Lissinagroagh Rotary Core Photographs

BH02



Lissinagroagh Rotary Core Photographs

BH02



GROUND INVESTIGATIONS IRELAND
Geotechnical & Environmental

Client: Tobin

Job Ref: 15017-09-25

Site: Lissinagroagh Wind Farm

Date: 21-11-2025

Borehole ref: BH02

Depth: From 8.7m to 11.35m

Box No: 3 of 4



Lissinagroagh Rotary Core Photographs



GROUND INVESTIGATIONS IRELAND
Geotechnical & Environmental

Client: Tobin

Job Ref: 15017-09-25

Site: Lissinagroagh Wind Farm

Date: 26-11-2025

Borehole ref: BH02

Depth: From 11.35m to 12.30m

Box No: 4 of 4



GROUND INVESTIGATIONS IRELAND
Geotechnical & Environmental

Client: Tobin

Job Ref: 15017-09-25

Site: Lissinagroagh Wind Farm

Date: 26-11-2025

Borehole ref: BH01

Depth: From 12.30m to 12.80m

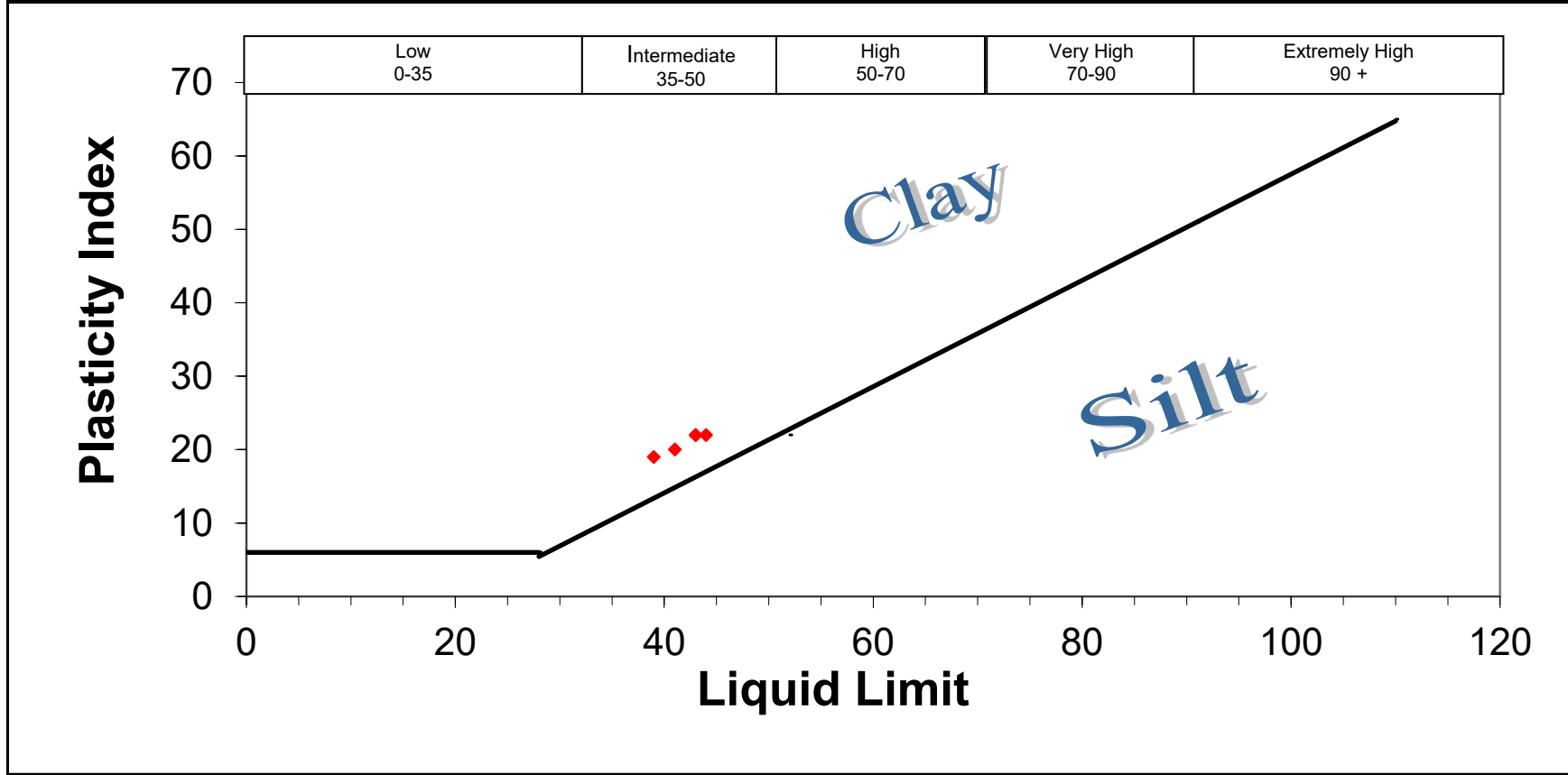
Box No: 3 of 3



APPENDIX 6 – Laboratory Testing



NMTL LTD Unit 18c, Tullow Industrial Estate Tullow County Carlow Tel: 00353 59 9180822 Mob: 00353 872575508 billa@nmtl.ie	Contract: Lissinagroagh Wind Farm
	Client: Ground Investigations Ireland ltd
	Engineer: Diarmaid Maglochlainn
	GII Project ID 15017-09-25
	Date: 25/02/2026
	Tested By: Js Checked: Bc
Job ref No. NMTL 3905	

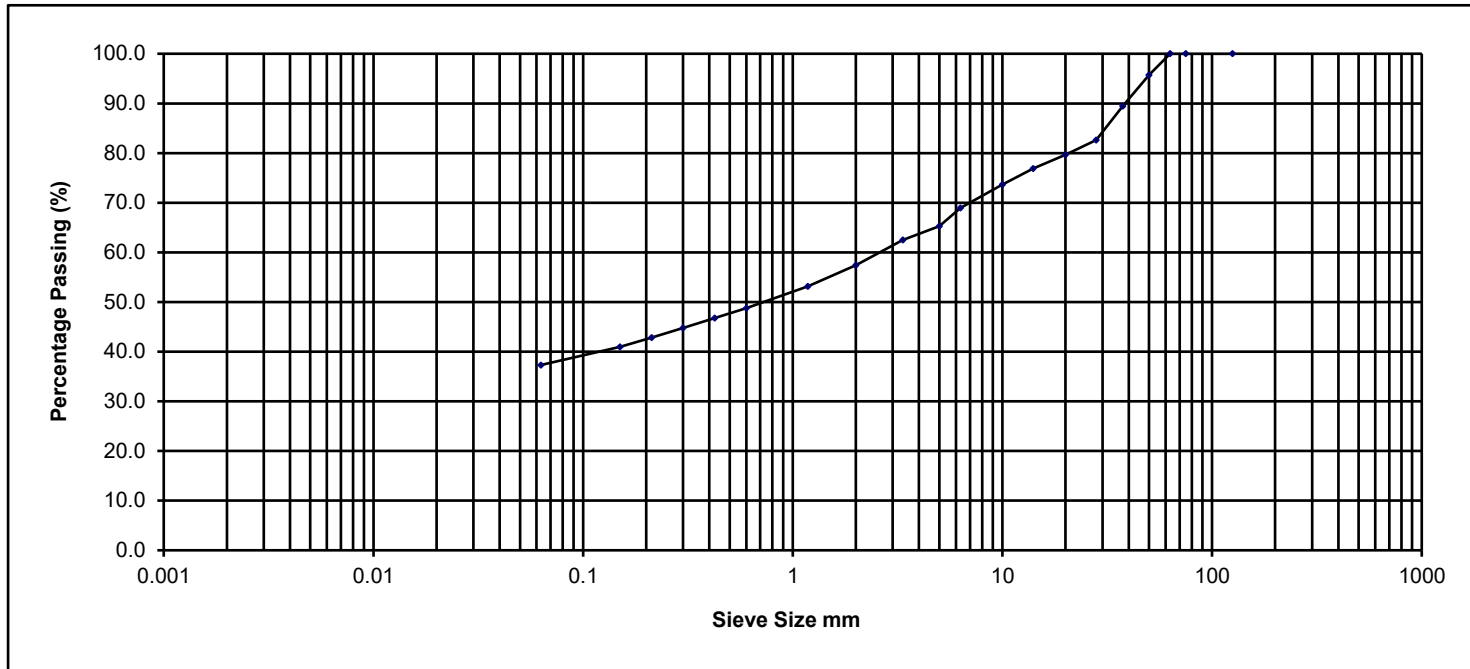


NMTL Ltd

Sieve Size mm	% Passing
125.000	100.0
75.000	100.0
63.000	100.0
50.000	95.7
37.500	89.5
28.000	82.6
20.000	79.7
14.000	76.9
10.000	73.7
6.300	68.9
5.000	65.3
3.350	62.5
2.000	57.4
1.180	53.1
0.600	48.8
0.425	46.7
0.300	44.8
0.212	42.9
0.150	40.9
0.063	37.3

Determination of Particle Size Distribution

BS 1377 : 2022: Part 2 : Clauses 10 & Part 4: BS EN ISO 17892-4-2016



Percentage Particle Size

Clay	Fine	Medium	Coarse	Fine	Medium	Coarse	Fine	Medium	Coarse	Cobbles	Boulder
	Silt			Sand			Gravel				
	37.3			20.1			42.6			0.0	0.0

Sample Description Grey slightly sandy gravelly silty CLAY.

Project No. NMTL 3905

BH/TP No. TP03

Project Lissinagroagh Wind Farm

GII PROJECT ID:15017-09-25

Sample No. B

NM
TL
Ltd

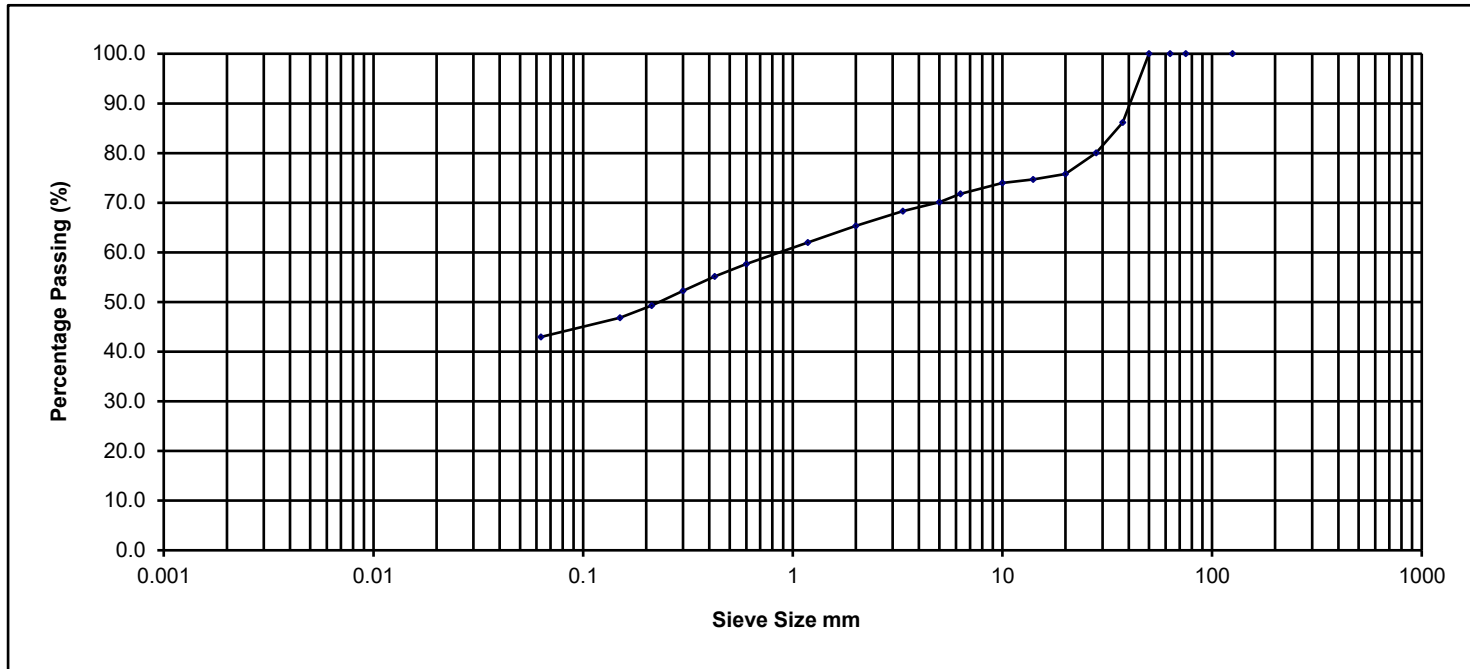
Operator	Js	Checked	Nc	Approved	Bc	Date sample tested	20/02/2026	Depth	1.00m
----------	----	---------	----	----------	----	--------------------	------------	-------	-------

NMTL Ltd

Sieve	%
Size mm	Passing
125.000	100.0
75.000	100.0
63.000	100.0
50.000	100.0
37.500	86.2
28.000	80.0
20.000	75.8
14.000	74.7
10.000	74.0
6.300	71.8
5.000	70.1
3.350	68.3
2.000	65.3
1.180	62.0
0.600	57.7
0.425	55.2
0.300	52.2
0.212	49.3
0.150	46.8
0.063	43.0

Determination of Particle Size Distribution

BS 1377 : 2022: Part 2 : Clauses 10 & Part 4: BS EN ISO 17892-4-2016



Percentage Particle Size

Clay	Fine			Medium			Coarse			Cobbles	Boulder
	Fine	Medium	Coarse	Fine	Medium	Coarse	Fine	Medium	Coarse		
	Silt			Sand			Gravel				
	43.0			22.4			34.7			0.0	0.0

Sample Description Brown/grey slightly sandy gravelly silty CLAY.

Project No. NMTL 3905

BH/TP No. TP05

Project Lissinagroagh Wind Farm

GII PROJECT ID:15017-09-25

Sample No. B

NM
TL
Ltd

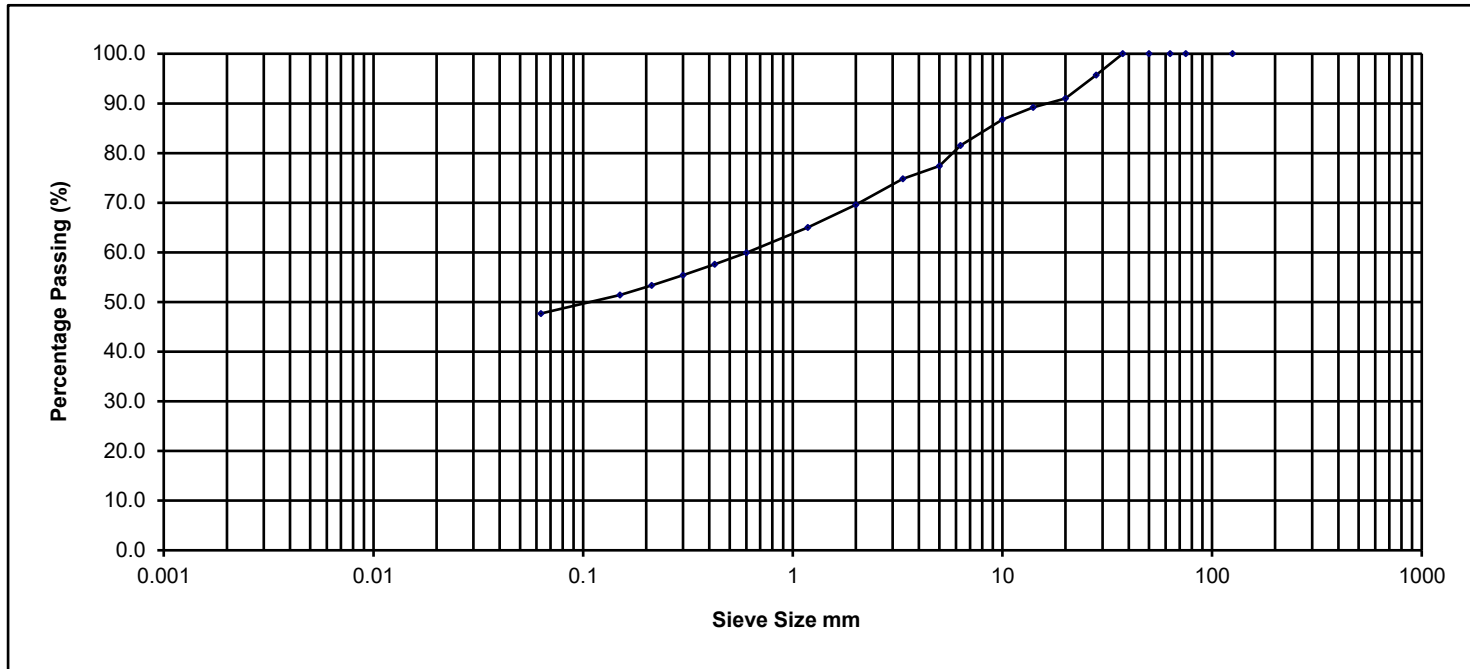
Operator	Js	Checked	Nc	Approved	Bc	Date sample tested	20/02/2026	Depth	1.00m
----------	----	---------	----	----------	----	--------------------	------------	-------	-------

NMTL Ltd

Sieve	%
Size mm	Passing
125.000	100.0
75.000	100.0
63.000	100.0
50.000	100.0
37.500	100.0
28.000	95.7
20.000	91.0
14.000	89.2
10.000	86.8
6.300	81.5
5.000	77.4
3.350	74.8
2.000	69.6
1.180	65.0
0.600	59.9
0.425	57.6
0.300	55.4
0.212	53.3
0.150	51.4
0.063	47.7

Determination of Particle Size Distribution

BS 1377 : 2022: Part 2 : Clauses 10 & Part 4: BS EN ISO 17892-4-2016



Percentage Particle Size

Clay	Fine			Medium			Coarse			Cobbles	Boulder
	Fine	Medium	Coarse	Fine	Medium	Coarse	Fine	Medium	Coarse		
	Silt			Sand			Gravel			0.0	0.0
	47.7			21.9			30.4				

Sample Description Dark grey slightly sandy slightly gravelly silty CLAY.

Project No. NMTL 3905

BH/TP No. TP07

Project Lissinagroagh Wind Farm

GII PROJECT ID:15017-09-25

Sample No. B

NM
TL
Ltd

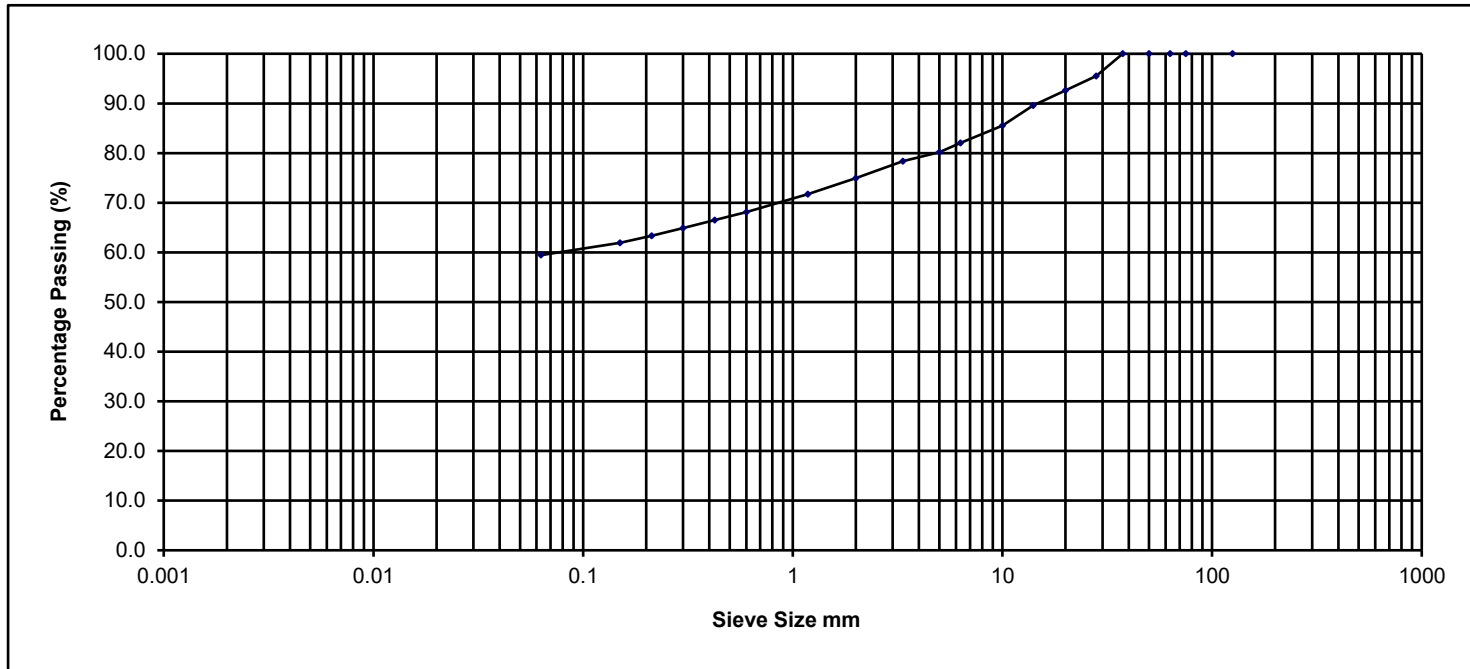
Operator	Js	Checked	Nc	Approved	Bc	Date sample tested	20/02/2026	Depth	1.50m
----------	----	---------	----	----------	----	--------------------	------------	-------	-------

NMTL Ltd

Sieve Size mm	% Passing
125.000	100.0
75.000	100.0
63.000	100.0
50.000	100.0
37.500	100.0
28.000	95.5
20.000	92.6
14.000	89.6
10.000	85.5
6.300	82.0
5.000	80.2
3.350	78.4
2.000	74.9
1.180	71.7
0.600	68.1
0.425	66.5
0.300	64.9
0.212	63.4
0.150	61.9
0.063	59.4

Determination of Particle Size Distribution

BS 1377 : 2022: Part 2 : Clauses 10 & Part 4: BS EN ISO 17892-4-2016



Percentage Particle Size

Clay	Fine			Medium			Coarse			Cobbles	Boulder
	Fine	Medium	Coarse	Fine	Medium	Coarse	Fine	Medium	Coarse		
	Silt			Sand			Gravel				
	59.4			15.5			25.1			0.0	0.0

Sample Description Dark grey/black slightly sandy slightly gravelly silty CLAY.

Project No. NMTL 3905

BH/TP No. TP08

Project Lissinagroagh Wind Farm

GII PROJECT ID:15017-09-25

Sample No. B

NMTL Ltd

Operator	Js	Checked	Nc	Approved	Bc	Date sample tested	20/02/2026	Depth	1.00m
----------	----	---------	----	----------	----	--------------------	------------	-------	-------